

## CD23 Recombinant Rabbit Monoclonal Antibody Product Datasheet

Catalog# BX50044

Clone# BP6049

**Predicted Molecular Wt:** 36kDa  
**Species Cross-reactivity:** Human  
**Applications:** IHC-P

**Purity:** ProA affinity purified IgG  
**Form:** Liquid  
**Swissprot ID:** P06734

### Background:

CD23 antigen is a transmembrane glycoprotein by various hematopoietic cell types and functions as a low-affinity receptor for IgE. CD23 is involved in regulating IgE production and has other potential biologic functions, including promoting the survival of germinal center B lymphocytes.

CD23 is found in some mature B-cell lymphomas and in Reed-Sternberg cells in Hodgkin disease. Follicular dendritic cells and some activated B-cells within germinal centers express CD23 in high density and mantle zone B-cells are stained weakly. The majority of chronic lymphocytic leukemias/small lymphocytic lymphomas are CD23 positive, whereas mantle cell lymphomas are generally negative.

CD23 has been shown to be useful for the differentiation of small lymphocytic lymphomas and mantle cell lymphoma.

### Subcellular location:

Membrane

### Recommended method:

Heat induced epitope retrieval with Tris-EDTA buffer (pH 9.0), primary antibody incubate at RT (18°C-25°C) for 30 minutes.

### Immunogen:

Synthetic peptide corresponding to CD23 residues within aa221-321 of CD23 was used as an immunogen.

### Storage Buffer:

PBS 59%, Sodium azide 0.01%, Glycerol 40%, BSA 0.05%.

### Storage conditions:

-20°C

### Storage instructions:

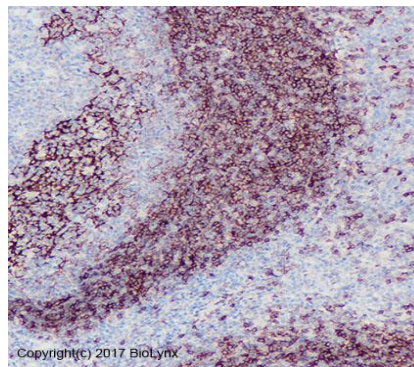
Shipped on blue ice. Upon delivery, aliquot, and store at -20°C. Avoid freeze / thaw cycles.

### Recommended Dilutions:

IHC-P: 1:100-1:200

### Background References:

1. Olteanu H, et al. Am J Clin Pathol. 2011 Jan;135(1):46-53.
2. Kumar S, et al. Mod Pathol. 1996 Sep;9(9):925-9.



Immunohistochemistry (Formalin/PFA-fixed paraffin-embedded sections analysis of tonsil tissue labelling CD23 with BP6049. Heat mediated antigen retrieval was performed using Tris/EDTA buffer pH 9.0

Product QC'd by:



For research use only. Not for use in diagnostic or therapeutic applications.