

CD35 Recombinant Rabbit Monoclonal Antibody Product Datasheet

Catalog# BX50064

Clone# BP6069

Predicted Molecular Wt: 224kDa

Species Cross-reactivity: Human

Applications: IHC-P

Purity: ProA affinity purified IgG

Form: Liquid

Swissprot ID: P17927

Background:

CD35, complement receptor 1, is a cell membrane-bound, monomeric glycoprotein on numerous cell types including erythrocytes, leukocytes, glomerular podocytes, and follicular dendritic cells. The primary function of CD35 is to serve as the cellular receptor for C3b and C4b, the most important components of the complement system leading to clearance of foreign macromolecules.

CD35 antigen is found on erythrocytes, B cells, a subset of T cells, monocytes, as well as eosinophils, and neutrophils. Anti-CD35 is considered a mature B-cell marker which labels follicular dendritic reticulum cells and tumors derived from such cells such as follicular dendritic cell tumor/sarcoma.

Subcellular location:

Membrane

Recommended method:

Heat induced epitope retrieval with Tris-EDTA buffer (pH 9.0), primary antibody incubate at RT (18°C-25°C) for 30 minutes.

Immunogen:

Synthetic peptide corresponding to CD35 residues within aa1939-2039 of CD35 was used as an immunogen.

Storage Buffer:

PBS 59%, Sodium azide 0.01%, Glycerol 40%, BSA 0.05%.

Storage conditions:

-20°C

Storage instructions:

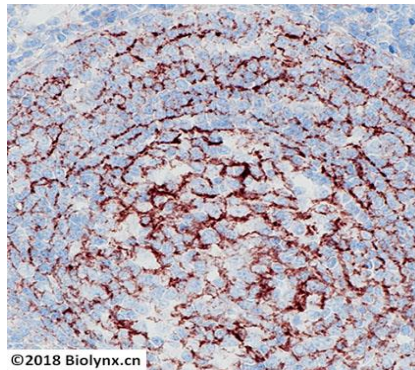
Shipped on blue ice. Upon delivery, aliquot, and store at -20°C. Avoid freeze / thaw cycles.

Recommended Dilutions:

IHC-P: 1:100-1:200

Background References:

1. Biddle DA et al. Mod Pathol. 2002 Jan;15(1):50-8.
2. Dogan A et al. Am J Surg Pathol. 2003 Jul;27(7):903-11.



Immunohistochemistry (Formalin/PFA-fixed paraffin-embedded sections analysis of tonsil tissue labelling CD35 with BP6069. Heat mediated antigen retrieval was performed using Tris/EDTA buffer pH 9.0

Product QC'd by: 

For research use only. Not for use in diagnostic or therapeutic applications.