

## CD31 Recombinant Rabbit Monoclonal Antibody Product Datasheet

Catalog# BX50032

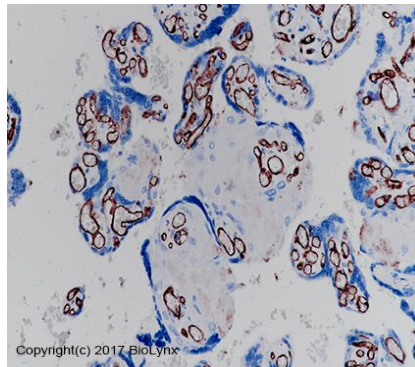
Clone# BP6037

**Predicted Molecular Wt:** 83kDa  
**Species Cross-reactivity:** Human  
**Applications:** IHC-P

**Purity:** ProA affinity purified IgG  
**Form:** Liquid  
**Swissprot ID:** P16284

### Background:

CD31 also designated as PECAM-1 (platelet endothelial cell adhesion molecule 1), is a transmembrane glycoprotein belongs to immunoglobulin superfamily, which is key factor for adhesion and accumulation of platelets. It is present on the surface of platelets, monocytes, macrophages, and neutrophils and is a constituent of the endothelial intercellular junction. CD31 is generally regarded to be the most sensitive and specific endothelial marker in paraffin sections, and is one of the best markers for benign and malignant vascular tumors.



Immunohistochemistry (Formalin/PFA-fixed paraffin-embedded sections analysis of placenta tissue labelling CD31 with BP6037. Heat mediated antigen retrieval was performed using Tris/EDTA buffer pH 9.0

### Subcellular location:

Membrane

### Recommended method:

Heat induced epitope retrieval with Tris-EDTA buffer (pH 9.0), primary antibody incubate at RT (18°C-25°C) for 30 minutes.

### Immunogen:

Synthetic peptide corresponding to CD31 residues within aa634-734 of CD31 was used as an immunogen.

### Storage Buffer:

PBS 59%, Sodium azide 0.01%, Glycerol 40%, BSA 0.05%.

### Storage conditions:

-20°C

### Storage instructions:

Shipped on blue ice. Upon delivery, aliquot, and store at -20°C. Avoid freeze / thaw cycles.

### Recommended Dilutions:

IHC-P: 1:100-1:200

### Background References:

1. Feng YM, et.al, Eur Rev Med Pharmacol Sci. 2016 Oct;20(19).
2. Pusztaszeri MP, et.al, J Histochem Cytochem. 2006 Apr;54(4):385-95.

Product QC'd by:



For research use only. Not for use in diagnostic or therapeutic applications.