

Rev.: 2019/2/13

Melan A Recombinant Rabbit Monoclonal Antibody Product Datasheet

Catalog# BX50081

Clone# BP6086

Predicted Molecular Wt: 13kDa
Species Cross-reactivity: Human
Applications: IHC-P

Purity: ProA affinity purified IgG
Form: Liquid
Swissprot ID: Q16655

Background:

Melan A is a transmembrane protein composed of 118 amino acids, which is expressed in skin, retina and the majority of cultured melanocytes as well as in melanomas and angiomyolipomas. The antibody is a useful aid for classification of melanomas and adrenocortical carcinomas, and for classification of angiomyolipomas.

Subcellular location:

Cytoplasm

Recommended method:

Heat induced epitope retrieval with Tris-EDTA buffer (pH 9.0), primary antibody incubate at RT (18°C-25°C) for 30 minutes.

Immunogen:

A synthetic peptide corresponding to residues on the N-terminus of human Melan A was used as an immunogen.

Storage Buffer:

PBS 59%, Sodium azide 0.01%, Glycerol 40%, BSA 0.05%.

Storage conditions:

-20°C

Storage instructions:

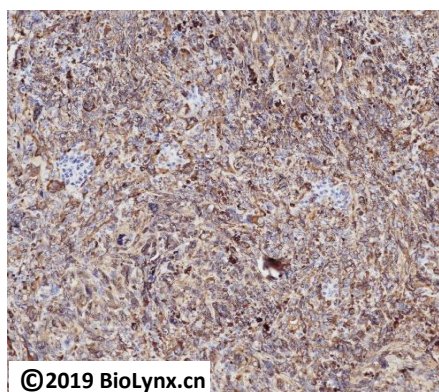
Shipped on blue ice. Upon delivery, aliquot, and store at -20°C. Avoid freeze / thaw cycles.

Recommended Dilutions:

IHC-P: 1:100-1:200

Background References:

1. Luo W, et al. Oncogene. 1998 Mar; 16(9):1141-7.
2. Fetsch PA, Cormier J, Hijazi YM. J Immunother 1997;20:60-4.



Immunohistochemistry (Formalin/PFA-fixed paraffin-embedded sections) analysis of Melanoma labelling Melan A with BP6086. Heat mediated antigen retrieval was performed using Tris/EDTA buffer pH 9.0

Product QC'd by:



For research use only. Not for use in diagnostic or therapeutic applications.