

Cytokeratin 18 Recombinant Rabbit Monoclonal Antibody Product Datasheet

Catalog# BX50049

Clone# BP6054

Predicted Molecular Wt: 48kDa
Species Cross-reactivity: Human
Applications: IHC-P

Purity: ProA affinity purified IgG
Form: Liquid
Swissprot ID: P05783

Background:

Cytokeratin 18 (also named keratin 18) is a type I cytokeratin. It is, together with its filament partner keratin 8, perhaps the most commonly found products of the intermediate filament gene family.

In some epithelial cell types, keratin 8 and keratin 18 are the sole keratins present. The classical example is the liver, with keratin 8/keratin 18 representing the characteristic and only keratin pair of normal hepatocytes. The same is true for other highly specialized parenchymatous epithelia such as acinar cells of the pancreas, proximal tubular epithelial cells of the kidney, and certain endocrine cells such as pancreatic islet cells. Furthermore, keratin 8/keratin 18 occur together with other keratins—in various pseudostratified (e.g. respiratory) and complex (e.g. glandular) epithelia and in the urothelium; in these composite epithelial tissues, keratin 8 and keratin 18 are often most prominent in the lumen-lining cells. Even in non-keratinizing stratified squamous epithelia, keratin 8 and keratin 18 may be focally expressed in the basal cell layer, together with keratin 19 and the constitutive stratified-epithelial keratins.

In regard to malignant tumors, keratin 8 and keratin 18 are expressed in most carcinomas except for some differentiated squamous cell carcinomas. Therefore, keratin 8 and keratin 18 antibody strongly stain most adenocarcinomas, hepatocellular carcinomas, renal cell carcinomas, and neuroendocrine carcinomas.

Subcellular location:

Cytoplasm

Recommended method:

Heat induced epitope retrieval with Tris-EDTA buffer (pH 9.0), primary antibody incubate at RT (18°C-25°C) for 30 minutes.

Immunogen:

Synthetic peptide corresponding to cytokeratin 18 residues within aa330-430 of cytokeratin 18 was used as an immunogen.

Storage Buffer:

PBS 59%, Sodium azide 0.01%, Glycerol 40%, BSA 0.05%.

Storage conditions:

-20°C

Storage instructions:

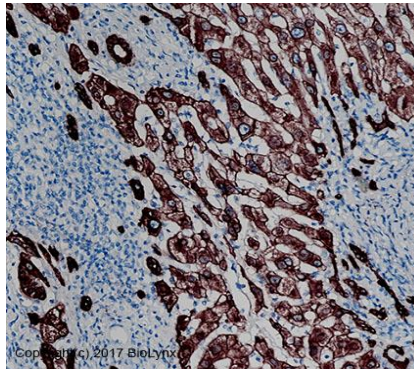
Shipped on blue ice. Upon delivery, aliquot, and store at -20°C. Avoid freeze / thaw cycles.

Recommended Dilutions:


IHC-P: 1:100-1:200

Background References:

1. Wiedenmann B, et.al. Proc Natl Acad Sci U S A. 1986 May;83(10):3500-4.
2. Quinn B. Am J Surg Pathol. 1998 May;22(5):550-6.



Immunohistochemistry (Formalin/PFA-fixed paraffin-embedded sections analysis of liver tissue labelling cytokeratin 18 with BP6054. Heat mediated antigen retrieval was performed using Tris/EDTA buffer pH 9.0

Product QC'd by: 

For research use only. Not for use in diagnostic or therapeutic applications.