

EGFR Recombinant Rabbit Monoclonal Antibody Product Datasheet

Catalog# BX50092

Clone# BP6097

Predicted Molecular Wt: 134kDa

Species Cross-reactivity: Human

Applications: IHC-P

Purity: ProA affinity purified IgG

Form: Liquid

Swissprot ID: P00533

Background:

EGFR is type I receptor tyrosine kinase with sequence homology to erbB-1, -2, -3, -4. It binds to Epidermal Growth Factor (EGF), Transforming Growth Factor- α (TGF- α), Heparin-binding EGF (HB-EGF), amphiregulin, betacellulin and epiregulin. EGFR is overexpressed in tumors of breast, brain, bladder, lung, gastric, head, neck, esophagus, cervix, vulva, ovary, and endometrium. It is predominantly present in squamous cell carcinomas.

Subcellular location:

Cytoplasm

Recommended method:

Heat induced epitope retrieval with Tris-EDTA buffer (pH 9.0), primary antibody incubate at 4°C overnight.

Immunogen:

Synthetic peptide corresponding to EGFR residues within aa1050-1150 of EGFR was used as an immunogen.

Storage Buffer:

PBS 59%, Sodium azide 0.01%, Glycerol 40%, BSA 0.05%.

Storage conditions:

-20°C

Storage instructions:

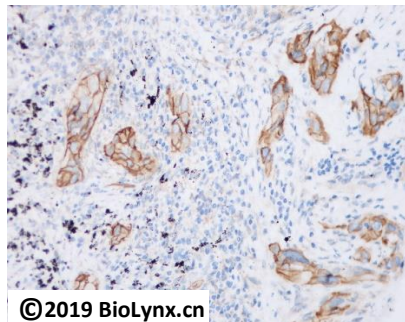
Shipped on blue ice. Upon delivery, aliquot, and store at -20°C. Avoid freeze / thaw cycles.

Recommended Dilutions:


IHC-P: 1:100-1:200

Background References:

1. Brustmann H, et al. Int J Gynecol Pathol. 2011 Jan; 30(1):76-83.
2. Vranic S, et al. Hum Pathol. 2010 Nov; 41(11):1617-23.



Immunohistochemistry (Formalin/PFA-fixed paraffin-embedded sections analysis of lung carcinoma tissue labelling EGFR with BP6097. Heat mediated antigen retrieval was performed using Tris/EDTA buffer pH 9.0

Product QC'd by: 

For research use only. Not for use in diagnostic or therapeutic applications.