

EpCAM Recombinant Rabbit Monoclonal Antibody Product Datasheet

Catalog# BX50051

Clone# BP6056

Predicted Molecular Wt: 35kDa
Species Cross-reactivity: Human
Applications: IHC-P

Purity: ProA affinity purified IgG
Form: Liquid
Swissprot ID: P16422

Background:

Epithelial cell adhesion molecule (EpCAM) is a transmembrane glycoprotein, may act as a physical homophilic interaction molecule between intestinal epithelial cells (IECs) and intraepithelial lymphocytes (IELs) at the mucosal epithelium for providing immunological barrier as a first line of defense against mucosal infection. It plays a role in embryonic stem cells proliferation and differentiation, and it up-regulates the expression of FABP5, MYC and cyclins A and E.

This glycoprotein is located on the cell membrane surface (preferentially basolaterally) and in the cytoplasm of virtually all epithelial cells with the exception of most squamous epithelia, hepatocytes, renal proximal tubular cells, gastric parietal cells and myoepithelial cells. However, focal positivity may be seen in the basal layer of squamous cell epithelium of endoderm (e.g., palatine tonsils) and mesoderm (e.g., uterine cervix). Normal mesothelial cells are EpCAM negative, but may express focal reaction when undergoing reactive changes. EpCAM has been seen in the majority of epithelial neoplasms, whereas most non-epithelial neoplasms do not show EpCAM expression.

In conjunction with other markers, EpCAM can be used as an aid in determining neoplasms of epithelial origin, such as distinguishing between lung adenocarcinoma and mesothelioma.

Subcellular location:

Membrane

Recommended method:

Heat induced epitope retrieval with Tris-EDTA buffer (pH 9.0), primary antibody incubate at RT (18°C-25°C) for 30 minutes.

Immunogen:

Synthetic peptide corresponding to EpCAM residues within aa1-100 of EpCAM was used as an immunogen.

Storage Buffer:

PBS 59%, Sodium azide 0.01%, Glycerol 40%, BSA 0.05%.

Storage conditions:

-20°C

Storage instructions:

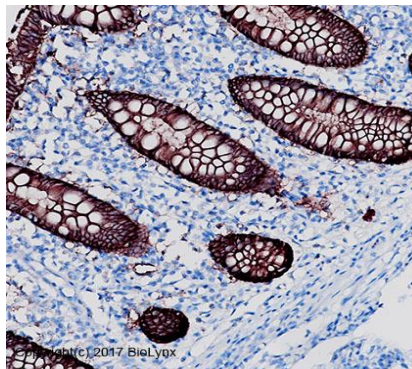
Shipped on blue ice. Upon delivery, aliquot, and store at -20°C. Avoid freeze / thaw cycles.

Recommended Dilutions:

IHC-P: 1:100-1:200

Background References:

1. Latza et al. J Clin Pathol. 1990;43:213-19.
2. Ordenez NG et al. Am J Clin Pathol 1998;109(1):85-89.



Immunohistochemistry (Formalin/PFA-fixed paraffin-embedded sections analysis of colon tissue labelling EpCAM with BP6056. Heat mediated antigen retrieval was performed using Tris/EDTA buffer pH 9.0

Product QC'd by: 

For research use only. Not for use in diagnostic or therapeutic applications.