

Mammaglobin Recombinant Rabbit Monoclonal Antibody Product Datasheet

Catalog# BX50121

Clone# BP6125

Predicted Molecular Wt: 10.5kDa

Species Cross-reactivity: Human

Applications: IHC-P

Purity: ProA affinity purified IgG

Form: Liquid

Swissprot ID: Q13296

Background:

Mammaglobin, 10 kDa, is a cytoplasmic protein, a mammary-specific member of the uteroglobin family. It is related to a family of epithelial secretory proteins that includes prostatein and Clara cell protein.

Mammaglobin occurs in about 80% of breast carcinomas. The extend is generally larger than that of GCDPF-15. Up to 15% of nonbreast carcinomas (such as stomach, lung, colon, hepatobiliary, thyroid, ovarian, and urothelial carcinomas) have been reported positive, usually only focally.

Mammaglobin is a sensitive and fairly specific marker for breast carcinoma. The panel should also include Gross cystic disease fluid protein-15 and Estrogen receptor alpha.

Subcellular location:

Cytoplasm

Recommended method:

Heat induced epitope retrieval with Tris-EDTA buffer (pH 9.0), primary antibody incubate at RT (18°C-25°C) for 30 minutes.

Immunogen:

Recombinant fragment corresponding to Human Mammaglobin was used as an immunogen.

Storage Buffer:

PBS 59%, Sodium azide 0.01%, Glycerol 40%, BSA 0.05%.

Storage conditions:

-20°C

Storage instructions:

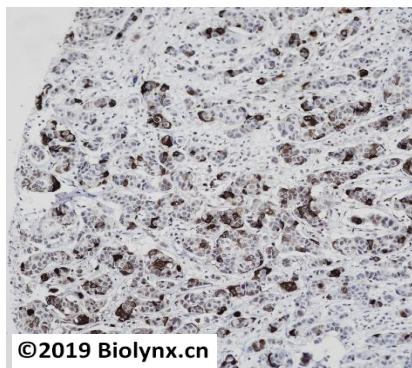
Shipped on blue ice. Upon delivery, aliquot, and store at -20°C. Avoid freeze / thaw cycles.

Recommended Dilutions:

IHC-P: 1:100-1:200

Background References:

1. Fanger GR et al. Tumour Biol 23:212-21 (2002).
2. Han JH et al. Arch Pathol Lab Med 127:1330-4 (2003).



Immunohistochemistry (Formalin/PFA-fixed paraffin-embedded sections) analysis of breast carcinoma labelling Mammaglobin with BP6125. Heat mediated antigen retrieval was performed using Tris/EDTA buffer pH 9.0.

©2019 Biolynx.cn

Product QC'd by:



For research use only. Not for use in diagnostic or therapeutic applications.