

## p120 Recombinant Rabbit Monoclonal Antibody Product Datasheet

Catalog# BX50070

Clone# BP6075

**Predicted Molecular Wt:** 108kDa

**Purity:** ProA affinity purified IgG

**Species Cross-reactivity:** Human

**Form:** Liquid

**Applications:** IHC-P

**Swissprot ID:** O60716

### Background:

Alpha-catenin and beta-catenin bind to the intracellular domain of E-cadherin while p120 catenin binds E-cadherin at a juxta-membrane site. The complex stabilizes tight junctions. In the cell, p120 catenin localized to the E-cadherin/catenins cell adhesion complex, directly associates with cytoplasmic C-terminus of E-cadherin and may similarly interact with other cadherins.

p120 is a proliferation-associated nucleolar protein found in most human malignant tumors, but not in resting normal cells. In colorectal cancer the altered localization of p120 catenin corresponds with loss of cytoplasmic localization of E-cadherin.

Studies have shown accurate categorization of ductal vs. lobular neoplasia in the breast was achieved with p120 staining. p120 expression further clarifies the separation of low-grade ductal carcinoma in situ from lobular neoplasia. Studies also have shown that altered expression of p120 catenin antibody predicts poor outcome in invasive breast cancer.

### Subcellular location:

Cytoplasm and membrane

### Recommended method:

Heat induced epitope retrieval with Tris-EDTA buffer (pH 9.0), primary antibody incubate at RT (18°C-25°C) for 30 minutes.

### Immunogen:

Synthetic peptide corresponding to p120 residues within aa900-1000 of p120 was used as an immunogen.

### Storage Buffer:

PBS 59%, Sodium azide 0.01%, Glycerol 40%, BSA 0.05%.

### Storage conditions:

-20°C

### Storage instructions:

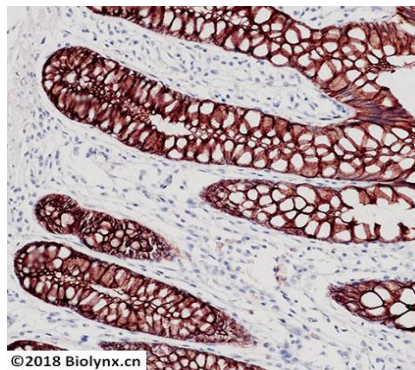
Shipped on blue ice. Upon delivery, aliquot, and store at -20°C. Avoid freeze / thaw cycles.

### Recommended Dilutions:

IHC-P: 1:100-1:200

### Background References:

1. Talvinen K, et al. Altered expression of p120 catenin predicts poor outcome in invasive breast cancer. J Cancer Res Clin Oncol. 2010 Sep; 136(9):1377-87.
2. Chivukula M, et al. Pleomorphic lobular carcinoma in situ (PLCIS) on breast core needle biopsies: clinical significance and immunoprofile. Am J Surg Pathol. 2008 Nov; 32(11):1721-6.



Immunohistochemistry (Formalin/PFA-fixed paraffin-embedded sections analysis of colon tissue labelling p120 with BP6075. Heat mediated antigen retrieval was performed using Tris/EDTA buffer pH 9.0



Product QC'd by:

For research use only. Not for use in diagnostic or therapeutic applications.