

## RRM1 Recombinant Rabbit Monoclonal Antibody Product Datasheet

Catalog# BX50118

Clone# BP6122

**Predicted Molecular Wt:** 90kDa  
**Species Cross-reactivity:** Human  
**Applications:** IHC-P

**Purity:** ProA affinity purified IgG  
**Form:** Liquid  
**Swissprot ID:** P23921

### Background:

Ribonucleotide reductase M1 polypeptide (RRM1) is one of two non-identical subunits for ribonucleoside-diphosphate reductase, an enzyme which catalyzes the biosynthesis of deoxyribonucleotides from the corresponding ribonucleotides. It provides the precursors necessary for DNA synthesis. RRM1 is present throughout the cell division cycle but downregulated in quiescent cells. RRM1 is involved in carcinogenesis, tumor progression, and the response of non-small-cell lung cancer (NSCLC) to chemotherapy.

### Subcellular location:

Cytoplasmic

### Recommended method:

Heat induced epitope retrieval with Tris-EDTA buffer (pH 9.0), primary antibody incubate at RT (18°C-25°C) for 30 minutes.

### Immunogen:

Synthetic peptide corresponding to residues within aa700-800 of Human RRM1 was used as an immunogen.

### Storage Buffer:

PBS 59%, Sodium azide 0.01%, Glycerol 40%, BSA 0.05%.

### Storage conditions:

-20°C

### Storage instructions:

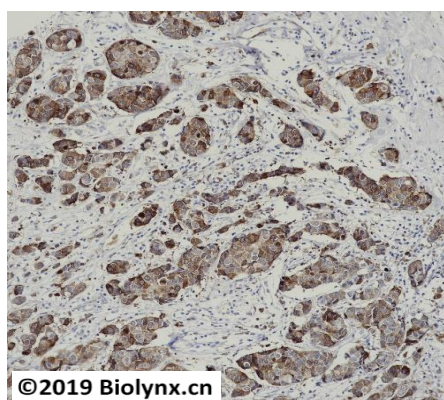
Shipped on blue ice. Upon delivery, aliquot, and store at -20°C. Avoid freeze / thaw cycles.

### Recommended Dilutions:


IHC-P: 1:100-1:200

### Background References:

- Wang, Q, et al. PLoS ONE. 2013 Jul;8(7):1-12.
- Nordlund P, et al. Annu Rev Biochem. 2006; 75:681-706.



Immunohistochemistry (Formalin/PFA-fixed paraffin-embedded sections) analysis of breast carcinoma tissue labelling RRM1 with BP6122. Heat mediated antigen retrieval was performed using Tris/EDTA buffer pH 9.0

Product QC'd by: 

**For research use only. Not for use in diagnostic or therapeutic applications.**