

## Cytokeratin 20 Recombinant Rabbit Monoclonal Antibody Product Datasheet

Catalog# BX50025

Clone# BP6030

**Predicted Molecular Wt:** 48kDa  
**Species Cross-reactivity:** Human  
**Applications:** IHC-P

**Purity:** ProA affinity purified IgG  
**Form:** Liquid  
**Swissprot ID:** P35900

### Background:

Cytokeratin 20 is the simple-epithelial keratin with the most restricted expression pattern. For pair formation, its type II partner usually appears to be cytokeratin 8.

The remarkable expression spectrum of cytokeratin 20 among normal tissues comprises gastric foveolar epithelium and small and large intestinal epithelium and, in addition, the urothelium and certain neuroendocrine cells, in particular Merkel cells of the skin. In tumor tissues, cytokeratin 20 is expressed in adenocarcinomas of the colon, stomach, pancreas, bile system and mucinous ovarian tumors, transitional cell carcinomas of the urinary tract, and Merkel cell carcinomas.

Cytokeratin 20 is often used in conjunction with CK7 and other antibodies in distinguishing colon carcinomas (CK20+) from ovarian, pulmonary, and breast carcinomas.

### Subcellular location:

Cytoplasm

### Recommended method:

Heat induced epitope retrieval with Tris-EDTA buffer (pH 9.0), primary antibody incubate at RT (18°C-25°C) for 30 minutes.

### Immunogen:

Synthetic peptide corresponding to cytokeratin 20 residues within aa324-424 of cytokeratin 20 was used as an immunogen.

### Storage Buffer:

PBS 59%, Sodium azide 0.01%, Glycerol 40%, BSA 0.05%.

### Storage conditions:

-20°C

### Storage instructions:

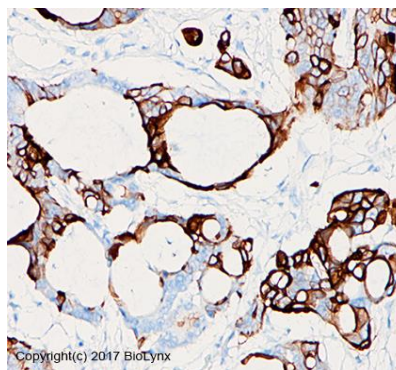
Shipped on blue ice. Upon delivery, aliquot, and store at -20°C. Avoid freeze / thaw cycles.

### Recommended Dilutions:

IHC-P: 1:100-1:200

### Background References:

1. Scott MP, et.al, Am J Dermatopathol. 1999 Feb;21(1):16-20.
2. Moll R, et.al, Am J Pathol. 1992 Feb;140(2):427-47.



Immunohistochemistry (Formalin/PFA-fixed paraffin-embedded sections analysis of human colonic adenocarcinoma tissue labelling Cytokeratin 20 with BP6030. Heat mediated antigen retrieval was performed using Tris/EDTA buffer pH 9.0

Product QC'd by: 

For research use only. Not for use in diagnostic or therapeutic applications.