

Beta III tubulin Recombinant Rabbit Monoclonal Antibody Product Datasheet

Catalog# BX00009

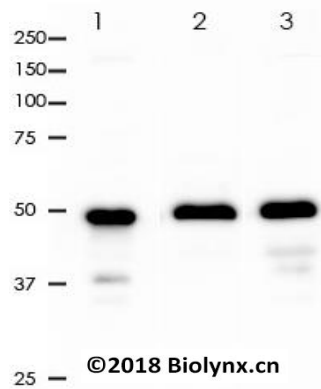
Clone# RR607

Predicted Molecular Wt: 50kDa
Species Cross-reactivity: Human Rat Mouse
Species cross-reactivity determined by WB
Applications: WB FC

Purity: ProA affinity purified IgG
Form: Liquid
Swissprot ID: Q13509

Background:

Tubulin is the major constituent of microtubules. It binds two moles of GTP, one at an exchangeable site on the beta chain and one at a non-exchangeable site on the alpha chain. TUBB3 plays a critical role in proper axon guidance and maintenance.



All lanes: Anti-Beta III tubulin antibody at 1:5,000 dilution

Predicted MW: 50 kDa
 Observed MW: 50 kDa

Lane 1: Jurkat
 Lane 2: PC-12
 Lane 3: 3T3

Lysates at 10 µg per lane
 2nd Ab:
 GAR HRP(H+L) 1:10,000
 Exposure: 40s

Immunogen:

A synthetic peptide corresponding to residues on the C-terminus of human beta III tubulin was used as an immunogen.

Storage Buffer:

PBS 59%, Sodium azide 0.01%, Glycerol 40%, BSA 0.05%.

Storage conditions:

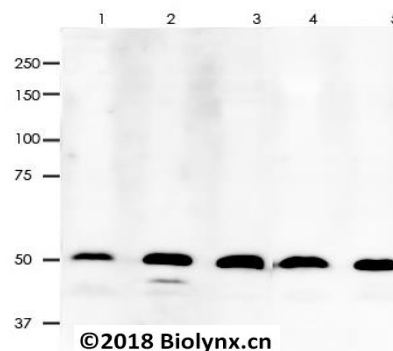
-20°C.

Storage instructions:

Shipped on blue ice. Upon delivery, aliquot, and store at -20°C. Avoid freeze / thaw cycles.

Recommended Dilutions:

WB: 1:2,000 - 1:5,000
 FC: 1:200 - 1:1,000



All lanes: Anti-Beta III tubulin antibody at 1:5,000 dilution

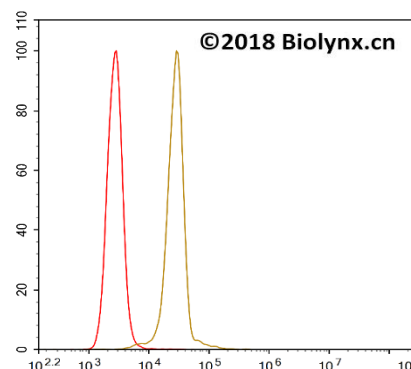
Predicted MW: 50 kDa
 Observed MW: 50 kDa

Lane 1: Mu Heart
 Lane 2: Mu Kidney
 Lane 3: Mu Liver
 Lane 4: Rat Heart
 Lane 5: Rat Liver

Lysates at 10 µg per lane
 2nd Ab:
 GAR HRP(H+L) 1:10,000
 Exposure: 100s

Background References:

- Li Y et al., Stem Cell Reports 8:883-893 (2017).
- Allison R et al., J Cell Biol 216:1337-1355 (2017).



Overlay histogram showing HeLa cells stained with RR607 (gold). The cells were fixed with 4% paraformaldehyde (10 min) and then permeabilized with 0.1% TritonX-100 for 15 min. The cells were then incubated in the antibody (RR607, 1:1,000 dilution) in 1x PBS/1% BSA for 30 min at room temperature. The secondary antibody used was a Goat Anti-Rabbit Alexa Fluor® 488 (IgG H+L) at 1:2,000 dilution for 20 min at room temperature. Unlabelled sample (Red) was used as a control.

Product QC'd by:



For research use only. Not for use in diagnostic or therapeutic applications.