

## CD1a Recombinant Rabbit Monoclonal Antibody Product Datasheet

Catalog# BX00061

Clone# RR665

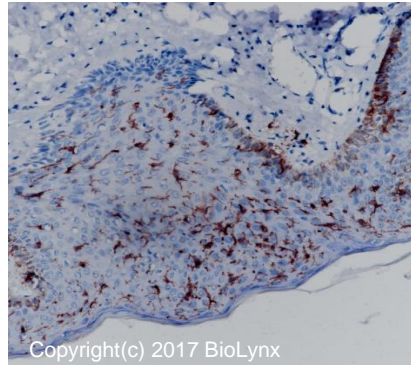
**Predicted Molecular Wt:** 37kDa  
**Species Cross-reactivity:** Human

**Purity:** ProA affinity purified IgG  
**Form:** Liquid  
**Swissprot ID:** P06126

**Applications:** IHC-P

### Background:

Antigen-presenting protein that binds self and non-self lipid and glycolipid antigens and presents them to T-cell receptors on natural killer T-cells.



Immunohistochemistry (Formalin/PFA-fixed paraffin-embedded sections) analysis of Tonsil tissue labelling CD1a with RR665 at 1:200. Heat mediated antigen retrieval was performed using Tris/EDTA buffer pH 9.0.

### Immunogen:

A synthetic peptide corresponding to the N-term of CD1a was used as an immunogen.

### Storage Buffer:

PBS 59%, Sodium azide 0.01%, Glycerol 40%, BSA 0.05%.

### Storage conditions:

-20°C.

### Storage instructions:

Shipped on blue ice. Upon delivery, aliquot, and store at -20°C. Avoid freeze / thaw cycles.

### Recommended Dilutions:

IHC-P: 1:100 - 1:200

### Background References:

1. Nguyen N et al. Head Neck 38:1074-84 (2016).
2. Tam J et al. J Tissue Eng Regen Med (2016).

Product QC'd by:



For research use only. Not for use in diagnostic or therapeutic applications.