

CD138 Recombinant Rabbit Monoclonal Antibody Product Datasheet

Catalog# BX00049

Clone# RR653

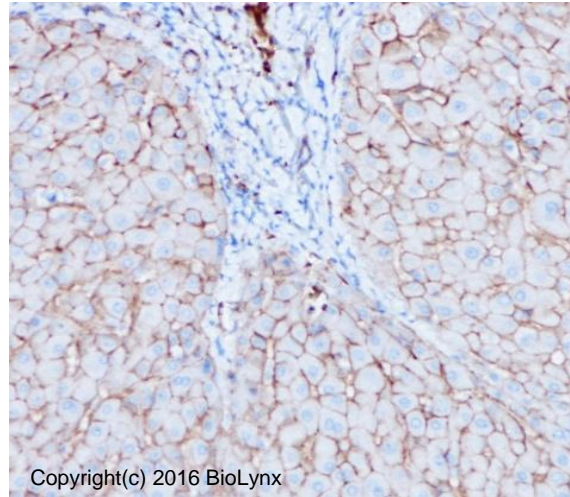
Predicted Molecular Wt: 33kDa
Species Cross-reactivity: Human

Purity: ProA affinity purified IgG
Form: Liquid
Swissprot ID: P18827

Applications: IHC-P FC

Background:

Cell surface proteoglycan that bears both heparan sulfate and chondroitin sulfate and that links the cytoskeleton to the interstitial matrix. Regulates exosome biogenesis in concert with SDCBP and PDCD6IP.



Immunogen:

A synthetic peptide corresponding to CD138 residues within aa200-300 of CD138 was used as an immunogen.

Storage Buffer:

PBS 59%, Sodium azide 0.01%, Glycerol 40%, BSA 0.05%.

Storage conditions:

-20°C.

Storage instructions:

Shipped on blue ice. Upon delivery, aliquot, and store at -20°C. Avoid freeze / thaw cycles.

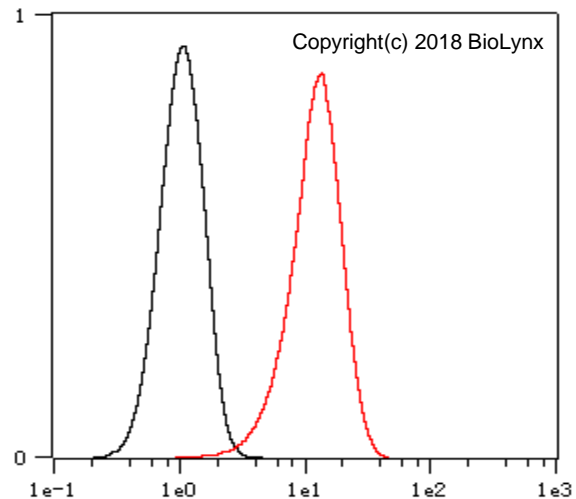
Recommended Dilutions:

IHC-P: 1:100 - 1:200
 FC: 1:25 - 1:100

Background References:

1. Nunez AL, et.al, Am J Clin Pathol. 2012 Mar;137(3):423-8.
2. O'Connell FP, et.al, Am J Clin Pathol. 2004 Feb;121(2):254-63.

Immunohistochemistry (Formalin/PFA-fixed paraffin-embedded sections) analysis of human liver tissue labelling CD138 with RR653 at 1:200. Heat mediated antigen retrieval was performed using Tris/EDTA buffer pH 9.0.



Overlay histogram showing Raji cells stained with RR653 (Red). The cells were fixed with 4% paraformaldehyde for 10 min. The cells were then incubated in the antibody (RR653, 1:100 dilution) in 1x PBS/1% BSA for 30 min at room temperature. The secondary antibody used was a Goat Anti-Rabbit Alexa Fluor® 488 (IgG H+L) at 1:2,000 dilution for 20 min at room temperature. Unlabelled sample (Black) was used as a control.

Product QC'd by:



For research use only. Not for use in diagnostic or therapeutic applications.