

Cytokeratin 18 Recombinant Rabbit Monoclonal Antibody Product Datasheet

Catalog# BX00089

Clone# RR693

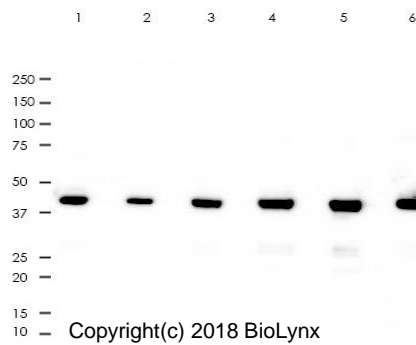
Predicted Molecular Wt: 48kDa
Species Cross-reactivity: Human Rat
Species cross-reactivity determined by WB

Purity: ProA affinity purified IgG
Form: Liquid
Swissprot ID: P05783

Applications: WB IHC-P IF/ICC FC IP

Background:

Involved in the uptake of thrombin-antithrombin complexes by hepatic cells. When phosphorylated, plays a role in filament reorganization. Involved in the delivery of mutated CFTR to the plasma membrane. Together with KRT8, is involved in interleukin-6 (IL-6)-mediated barrier protection.



All lanes: Anti-Cytokeratin 18 antibody at 1:10,000 dilution

Predicted MW: 48 kDa
 Observed MW: 48 kDa

Lane 1: HeLa
 Lane 2: A431
 Lane 3: HepG2
 Lane 4: T47D
 Lane 5: MCF-7
 Lane 6: A549

Lysate at 10 µg per lane
 2nd Ab:
 GAR HRP(H+L) 1:5,000

Immunogen:

A synthetic peptide corresponding to residues on the C-terminus of human Cytokeratin 18 was used as an immunogen.

Storage Buffer:

PBS 59%, Sodium azide 0.01%, Glycerol 40%, BSA 0.05%.

Storage conditions:

-20°C.

Storage instructions:

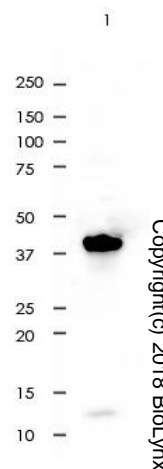
Shipped on blue ice. Upon delivery, aliquot, and store at -20°C. Avoid freeze / thaw cycles.

Recommended Dilutions:

WB: 1:2,000 - 1:5,000
 IHC-P: 1:800 - 1:1,600
 IF/ICC: 1:800 - 1:2,000
 FC: 1:800 - 1:2,000
 IP: 1:25

Background References:

1. Park HJ et al. Int J Stem Cells 9:186-191 (2016).
2. Heller JP et al. Front Cell Neurosci 9:449 (2015).

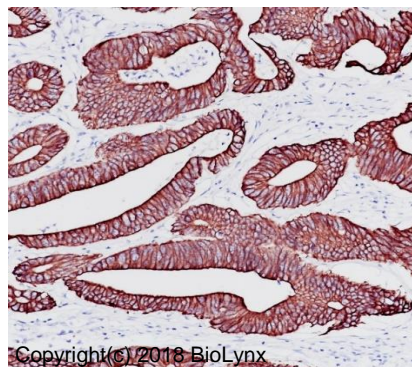


All lane: Anti-Cytokeratin 18 antibody at 1:5,000 dilution

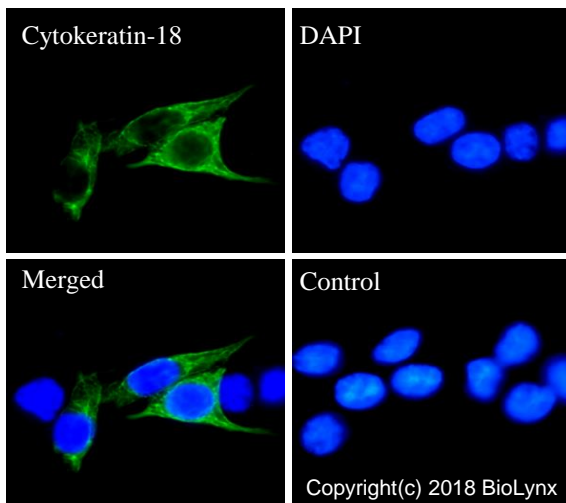
Predicted MW: 48 kDa
 Observed MW: 48 kDa

Lane 1: Rat Liver

Lysate at 10 µg per lane
 2nd Ab:
 GAR HRP(H+L) 1:5,000

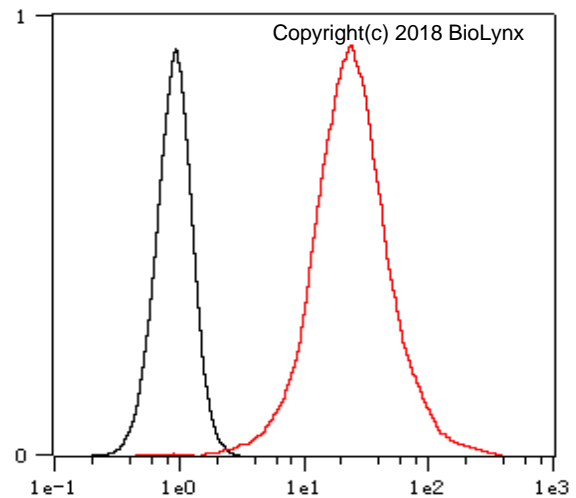


Immunohistochemistry (Formalin/PFA-fixed paraffin-embedded sections) analysis of colonic adenocarcinoma tissue labelling Cytokeratin 18 with RR693 at 1:1,600. Heat mediated antigen retrieval was performed using Tris/EDTA buffer pH 9.0.

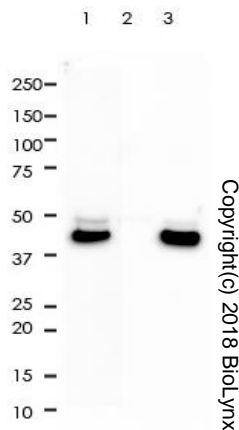


RR693 staining Cytokeratin 18 in HCT-116 cells by IF/ICC (immunofluorescence/immunocytochemistry). Cells were fixed with paraformaldehyde, permeabilized with 0.1% Triton X-100 and blocked with 10% goat serum for half an hour at room temperature. Samples were incubated with primary antibody (1:2,000) at 4°C. An Alexa Fluor® 488-conjugated Goat Anti-Rabbit IgG polyclonal was used as the secondary antibody (1:500). DAPI (blue) was used as the nuclear counter stain.

Control: PBS and secondary antibody, An Alexa Fluor® 488-conjugated Goat Anti-Rabbit IgG (1:500).



Overlay histogram showing HCT-116 cells stained Cytokeratin 18 with RR693 (Red). The cells were fixed with 4% paraformaldehyde (10 min) and then permeabilized with 0.1% TritonX-100 for 15 min. The cells were then incubated in the antibody (RR693, 1:2,000 dilution) in 1x PBS/1% BSA for 30 min at room temperature. The secondary antibody used was a Goat Anti-Rabbit Alexa Fluor® 488 (IgG H+L) at 1:2,000 dilution for 20 min at room temperature. Unlabelled sample (Black) was used as a control.



Cytokeratin 18 was immunoprecipitated from 0.4mg of HeLa whole cell lysate with RR693 at 1:25 dilution.

2nd Ab:
 GAR HRP for IP 1:500

Lane 1: RR693 IP in HeLa whole cell lysate
 Lane 2: PBS instead of RR693 in HeLa whole cell lysate
 Lane 3: HeLa whole cell lysate, 10 µg (input)

Exposure: 20s

Product QC'd by:



For research use only. Not for use in diagnostic or therapeutic applications.