

Cytokeratin 10 Recombinant Rabbit Monoclonal Antibody Product Datasheet

Catalog# BX00091

Clone# RR695

Predicted Molecular Wt: 59kDa
Species Cross-reactivity: Human

Purity: ProA affinity purified IgG
Form: Liquid
Swissprot ID: P13645

Applications: IHC-P FC

Background:

Keratins are a large family of proteins that form the intermediate filament cytoskeleton of epithelial cells, which are classified into two major sequence types. Type I keratins are a group of acidic intermediate filament proteins, including K9–K23, and the hair keratins Ha1–Ha8. Type II keratins are the basic or neutral counterparts to the acidic type I keratins, including K1–K8, and the hair keratins, Hb1–Hb6. As a type I keratin, keratin 10 is a suprabasal marker of differentiation in stratified squamous epithelia.

Immunogen:

A synthetic peptide corresponding to residues on the C-terminus of human Cytokeratin 10 was used as an immunogen.

Storage Buffer:

PBS 59%, Sodium azide 0.01%, Glycerol 40%, BSA 0.05%.

Storage conditions:

-20°C.

Storage instructions:

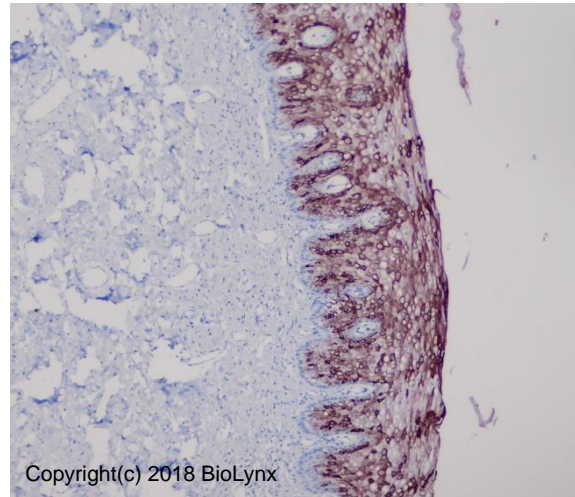
Shipped on blue ice. Upon delivery, aliquot, and store at -20°C. Avoid freeze / thaw cycles.

Recommended Dilutions:

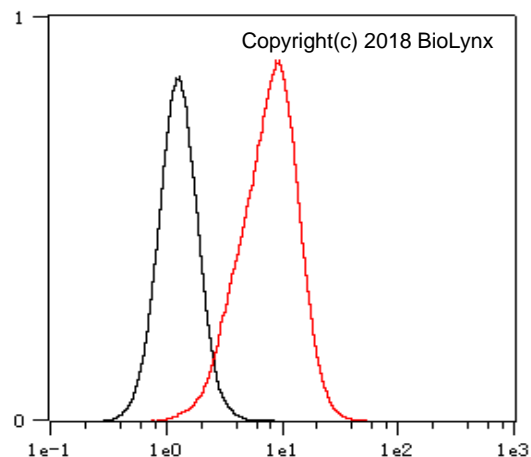
IHC-P: 1:6,400 - 1:12,800
 FC: 1:50 - 1:200

Background References:

- Zhang Z et al. Sci Rep 7:45262 (2017).
- Symonette CJ et al. Biomed Res Int 2014:727459 (2014).



Immunohistochemistry (Formalin/PFA-fixed paraffin-embedded sections) analysis of human cervix tissue labelling cytokeratin 10 with RR695 at 1:12,800. Heat mediated antigen retrieval was performed using Tris/EDTA buffer pH 9.0.



Overlay histogram showing HeLa cells stained with RR695 (Red). The cells were fixed with 4% paraformaldehyde for 10 mins. The cells were then incubated in the antibody (RR695, 1:200 dilution) in 1x PBS/1% BSA for 30 min at room temperature. The secondary antibody used was a Goat Anti-Rabbit Alexa Fluor® 488 (IgG H+L) at 1:2,000 dilution for 20 min at room temperature. Unlabelled sample (Black) was used as a control.

Product QC'd by:



For research use only. Not for use in diagnostic or therapeutic applications.