

Cytokeratin 6A/B/C Recombinant Rabbit Monoclonal Antibody Product Datasheet

Catalog# BX00098

Clone# RR702

Predicted Molecular Wt: 60kDa
Species Cross-reactivity: Human

Purity: ProA affinity purified IgG
Form: Liquid
Swissprot ID: P48668

Applications: IF/ICC

Background:

Epidermis-specific type I keratin involved in wound healing. Involved in the activation of follicular keratinocytes after wounding, while it does not play a major role in keratinocyte proliferation or migration. Participates in the regulation of epithelial migration by inhibiting the activity of SRC during wound repair.

Immunogen:

A synthetic peptide corresponding to residues on the C-terminus of human Cytokeratin 6A/B/C was used as an immunogen.

Storage Buffer:

PBS 59%, Sodium azide 0.01%, Glycerol 40%, BSA 0.05%.

Storage conditions:

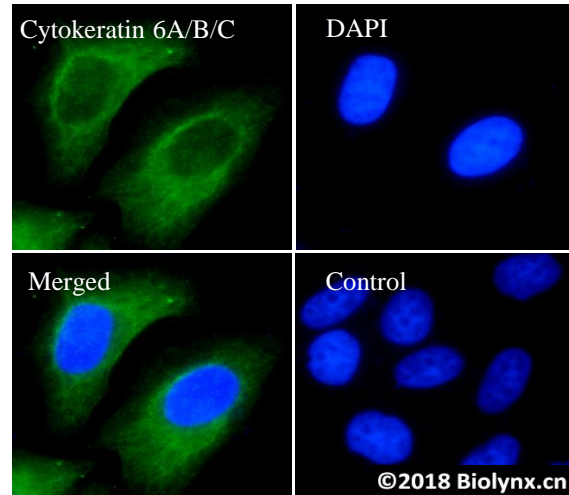
-20°C.

Storage instructions:

Shipped on blue ice. Upon delivery, aliquot, and store at -20°C. Avoid freeze / thaw cycles.

Recommended Dilutions:

IF/ICC: 1:10 - 1:50



RR702 staining Cytokeratin 6A/B/C in HeLa cells by IF/ICC (immunofluorescence/immunocytochemistry). Cells were fixed with paraformaldehyde, permeabilized with 0.1% Triton X-100 and blocked with 10% goat serum for half an hour at room temperature. Samples were incubated with primary antibody (1:50) at 4°C. An Alexa Fluor® 488-conjugated Goat Anti-Rabbit IgG polyclonal was used as the secondary antibody (1:500). DAPI (blue) was used as the nuclear counter stain. Control: PBS and secondary antibody, An Alexa Fluor® 488-conjugated Goat Anti-Rabbit IgG (1:500).

Background References:

- Hampel U et al. PLoS One 10:e0128096 (2015).
- Rice RH et al. PLoS One 8:e75355 (2013).

Product QC'd by:



For research use only. Not for use in diagnostic or therapeutic applications.