

CD3E Recombinant Rabbit Monoclonal Antibody Product Datasheet

Catalog# BX00057

Clone# RR661

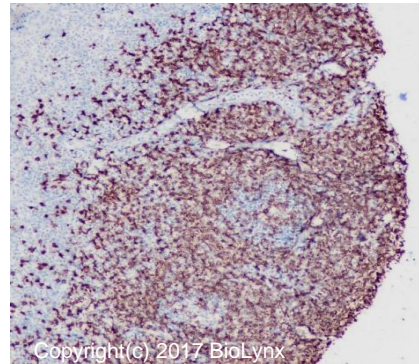
Predicted Molecular Wt: 23kDa
Species Cross-reactivity: Human

Purity: ProA affinity purified IgG
Form: Liquid
Swissprot ID: P07766

Applications: IHC-P FC

Background:

The CD3 protein is a T-cell marker, a complex of four structurally distinct membrane glycoprotein isoforms, 20-50 kDa, comprising extracellular, transmembrane and intracellular domains. The CD3 complex is responsible for mediating signal transduction to the internal environment upon antigenic recognition by TCR, causing T-cell proliferation and release of cytokines. Except for a weak expression in Purkinje cells (with some of the Abs) and activated NK-cells, CD3 is found only in T-cells.



Copyright(c) 2017 Biolynx

Immunogen:

A synthetic peptide corresponding to the C-term of CD3E was used as an immunogen.

Immunohistochemistry (Formalin/PFA-fixed paraffin-embedded sections) analysis of Tonsil tissue labelling CD3E with RR661 at 1:200. Heat mediated antigen retrieval was performed using Tris/EDTA buffer pH 9.0.

Storage Buffer:

PBS 59%, Sodium azide 0.01%, Glycerol 40%, BSA 0.05%.

Storage conditions:

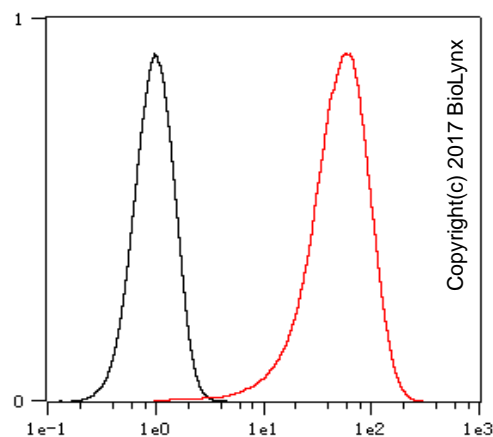
-20°C.

Storage instructions:

Shipped on blue ice. Upon delivery, aliquot, and store at -20°C. Avoid freeze / thaw cycles.

Recommended Dilutions:

IHC-P: 1:100 - 1:200
 FC: 1:10 - 1:50



Overlay histogram showing Raji cells stained with RR661 (Red). The cells were fixed with 4% paraformaldehyde for 10 mins. The cells were then incubated in the antibody (RR661, 1:10 dilution) in 1x PBS/1% BSA for 30 min at room temperature. The secondary antibody used was a Goat Anti-Rabbit Alexa Fluor® 488 (IgG H+L) at 1:2,000 dilution for 20 min at room temperature. Unlabelled sample (Black) was used as a control.

Background References:

1. Amrouche L et al. J Am Soc Nephrol 28:479-493 (2017).
2. Yu W et al. Sci Rep 7:1189 (2017).

Product QC'd by:



For research use only. Not for use in diagnostic or therapeutic applications.