

NaK ATPase Recombinant Rabbit Monoclonal Antibody Product Datasheet

Catalog# BX00081

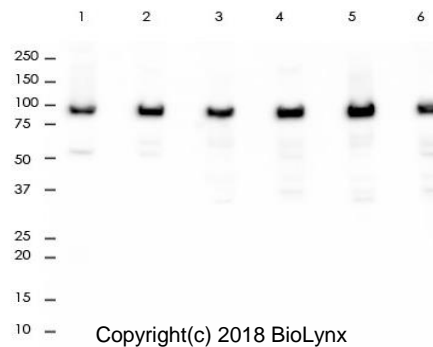
Clone# RR685

Predicted Molecular Wt: 113kDa
Species Cross-reactivity: Human Mouse Rat
Species cross-reactivity determined by WB
Applications: WB IHC-P FC IP

Purity: ProA affinity purified IgG
Form: Liquid
Swissprot ID: P05023

Background:

This is the catalytic component of the active enzyme, which catalyzes the hydrolysis of ATP coupled with the exchange of sodium and potassium ions across the plasma membrane. This action creates the electrochemical gradient of sodium and potassium ions, providing the energy for active transport of various nutrients.



All lanes: Anti-NaK ATPase antibody at 1:2,000 dilution
 Predicted MW: 113 kDa
 Observed MW: 100 kDa

Lane 1: 293
 Lane 2: HeLa
 Lane 3: MCF-7
 Lane 4: Raji
 Lane 5: TT
 Lane 6: HCT-116

Lysate at 10 µg per lane
 2nd Ab:
 GAR HRP(H+L) 1:5,000

Immunogen:

A synthetic peptide corresponding to residues on the N-terminus of human NaK ATPase was used as an immunogen.

Storage Buffer:

PBS 59%, Sodium azide 0.01%, Glycerol 40%, BSA 0.05%.

Storage conditions:

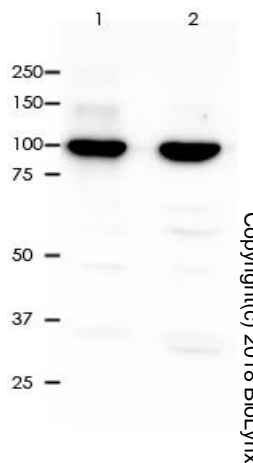
-20°C.

Storage instructions:

Shipped on blue ice. Upon delivery, aliquot, and store at -20°C. Avoid freeze / thaw cycles.

Recommended Dilutions:

WB: 1:2,000 - 1:5,000
 IHC-P: 1:10,000 - 1:20,000
 FC: 1:50 - 1:200
 IP: 1:50



All lanes: Anti-NaK ATPase antibody at 1:2,000 dilution
 Predicted MW: 113 kDa
 Observed MW: 100 kDa

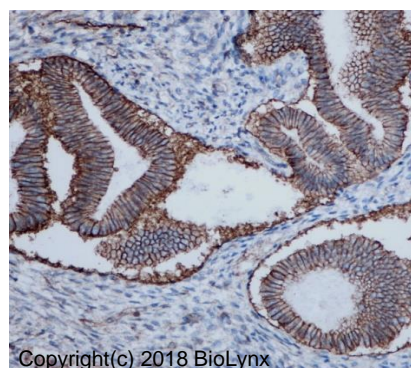
Lane 1: PC-12
 Lane 2: Raw264.7

Lysate at 7 µg per lane
 2nd Ab:
 GAR HRP(H+L) 1:5,000

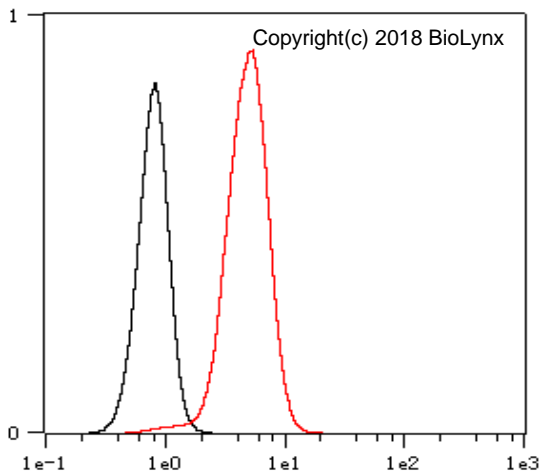
Exposure: 50s

Background References:

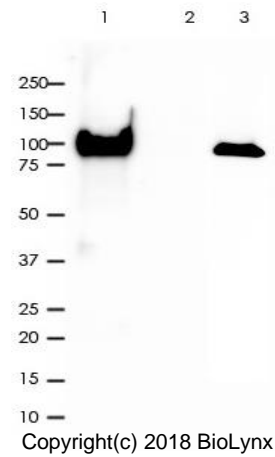
1. Antalffy G et al. *Biochim Biophys Acta* 1833:2561-72 (2013).
2. Czepiel M et al. *Glia* 59:882-92 (2011).



Immunohistochemistry (Formalin/PFA-fixed paraffin-embedded sections) analysis of endometrium tissue labelling NaK ATPase with RR685 at 1:10,000. Heat mediated antigen retrieval was performed using Tris/EDTA buffer pH 9.0.



Overlay histogram showing HeLa cells stained with RR685 (Red). The cells were fixed with 4% paraformaldehyde (10 min) and then permeabilized with 0.1% TritonX-100 for 15 min. The cells were then incubated in the antibody (RR685, 1:200 dilution) in 1x PBS/1% BSA for 30 min at room temperature. The secondary antibody used was a Goat Anti-Rabbit Alexa Fluor® 488 (IgG H+L) at 1:2,000 dilution for 20 min at room temperature. Unlabelled sample (Black) was used as a control.



NaK ATPase was immunoprecipitated from 0.4mg of TT whole cell lysate with RR685 at 1:50 dilution.
 2nd Ab:
 GAR HRP for IP 1:500

Lane 1: RR685 IP in TT whole cell lysate
 Lane 2: PBS instead of RR685 in TT whole cell lysate
 Lane 3: TT whole cell lysate, 10 µg (input)

Exposure: 120s

Product QC'd by:



For research use only. Not for use in diagnostic or therapeutic applications.