

CD117 Recombinant Rabbit Monoclonal Antibody Product Datasheet

Catalog# BX00097

Clone# RR701

Predicted Molecular Wt: 110kDa

Species Cross-reactivity: Human

Purity: ProA affinity purified IgG

Form: Liquid

Swissprot ID: P10721

Applications: IHC-P FC

Background:

Tyrosine-protein kinase that acts as cell-surface receptor for the cytokine KITLG/SCF and plays an essential role in the regulation of cell survival and proliferation, hematopoiesis, stem cell maintenance, gametogenesis, mast cell development, migration and function, and in melanogenesis. In response to KITLG/SCF binding, KIT can activate several signaling pathways. Phosphorylates PIK3R1, PLCG1, SH2B2/APS and CBL. Activates the AKT1 signaling pathway by phosphorylation of PIK3R1, the regulatory subunit of phosphatidylinositol 3-kinase.

Immunogen:

A synthetic peptide corresponding to residues on the C-terminus of human CD117 was used as an immunogen.

Storage Buffer:

PBS 59%, Sodium azide 0.01%, Glycerol 40%, BSA 0.05%.

Storage conditions:

-20°C.

Storage instructions:

Shipped on blue ice. Upon delivery, aliquot, and store at -20°C. Avoid freeze / thaw cycles.

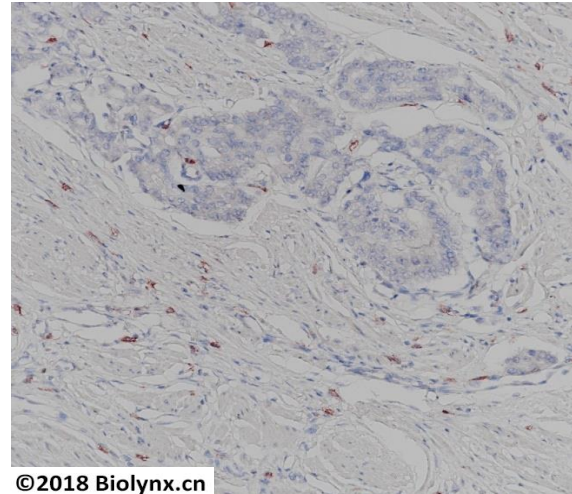
Recommended Dilutions:

IHC-P: 1:200 - 1:400

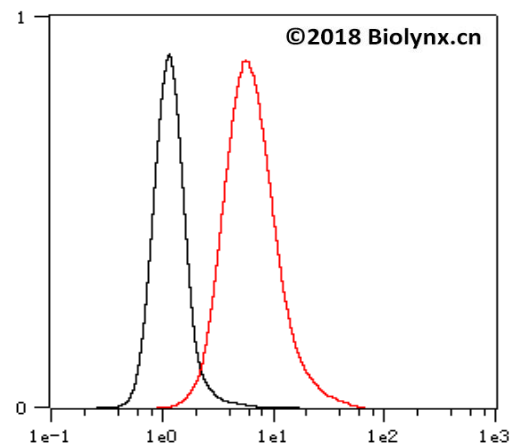
FC: 1:10 - 1:50

Background References:

1. Yu-Ching Lin Z et al. Dev Biol N/A:N/A (2015).
2. Guo JH et al. Am J Transl Res 7:502-12 (2015).

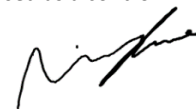


Immunohistochemistry (Formalin/PFA-fixed paraffin-embedded sections) analysis of human prostate cancer tissue labelling CD117 with RR701 at 1:400. Heat mediated antigen retrieval was performed using Tris/EDTA buffer pH 9.0.



Overlay histogram showing HeLa cells stained with RR701 (Red). The cells were fixed with 4% paraformaldehyde (10 min) and then permeabilized with 0.1% TritonX-100 for 15 min. The cells were then incubated in the antibody (RR701, 1:50 dilution) in 1x PBS/1% BSA for 30 min at room temperature. The secondary antibody used was a Goat Anti-Rabbit Alexa Fluor® 488 (IgG H+L) at 1:2,000 dilution for 20 min at room temperature. Unlabelled sample (Black) was used as a control.

Product QC'd by:



For research use only. Not for use in diagnostic or therapeutic applications.