

## Alpha smooth muscle Actin Recombinant Rabbit Monoclonal Antibody Product Datasheet

Catalog# BX00037

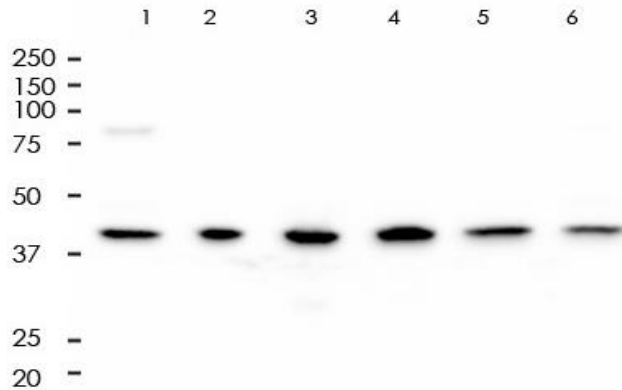
Clone# RR641

**Predicted Molecular Wt:** 42kDa  
**Species Cross-reactivity:** Human Mouse Rat  
*Species cross-reactivity determined by WB*  
**Applications:** WB IF/ICC FC

**Purity:** ProA affinity purified IgG  
**Form:** Liquid  
**Swissprot ID:** P62736

### Background:

Actins are highly conserved proteins that are involved in various types of cell motility and are ubiquitously expressed in all eukaryotic cells.



Copyright(c) 2017 Biolynx

All lanes: Anti-alpha smooth muscle Actin antibody at 1:5,000 dilution

### Immunogen:

A synthetic peptide corresponding to residues on the N-terminus of human alpha smooth muscle actin was used as an immunogen.

### Storage Buffer:

PBS 59%, Sodium azide 0.01%, Glycerol 40%, BSA 0.05%.

### Storage conditions:

-20°C.

### Storage instructions:

Shipped on blue ice. Upon delivery, aliquot, and store at -20°C. Avoid freeze / thaw cycles.

### Recommended Dilutions:

WB: 1:1,000 - 1:5,000  
 IF/ICC: 1:2,000 - 1:10,000  
 FC: 1:200 - 1:1,000

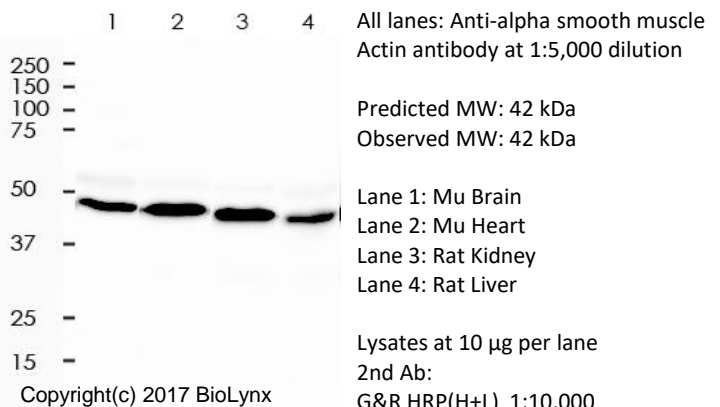
Lane 1: Rat Testis  
 Lane 2: A549  
 Lane 3: Rat Brain  
 Lane 4: HeLa  
 Lane 5: HepG2  
 Lane 6: K562

Predicted MW: 42 kDa  
 Observed MW: 42 kDa

Lysates at 10 µg per lane  
 2nd Ab:  
 G&R HRP(H+L) 1:10,000  
 Exposure: 100s

### Background References:

- Chen X., Sci Rep 7:40958 (2017).
- Vermillion MS., Nat Commun 8:14575 (2017).



Copyright(c) 2017 Biolynx

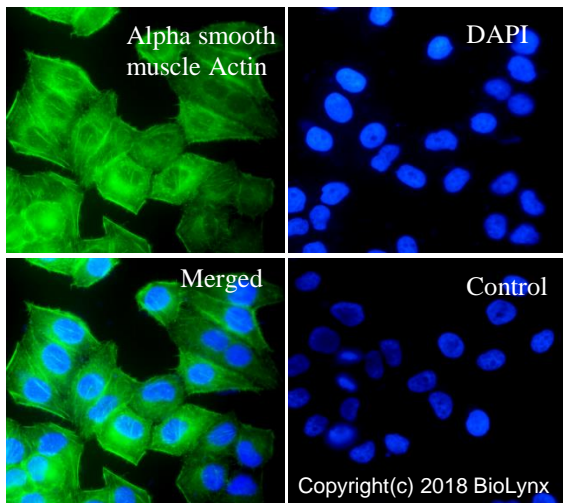
All lanes: Anti-alpha smooth muscle Actin antibody at 1:5,000 dilution

Predicted MW: 42 kDa  
 Observed MW: 42 kDa

Lane 1: Mu Brain  
 Lane 2: Mu Heart  
 Lane 3: Rat Kidney  
 Lane 4: Rat Liver

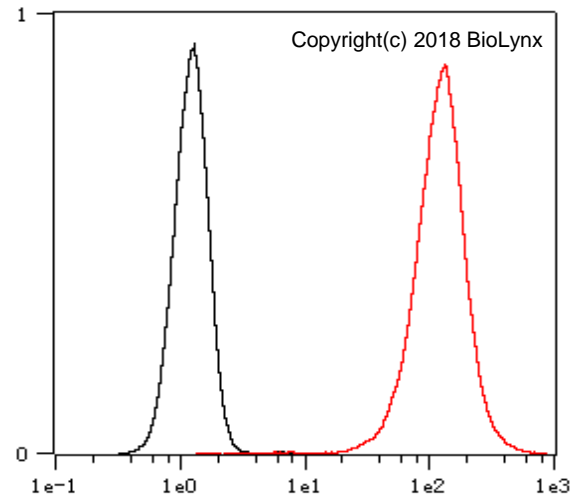
Lysates at 10 µg per lane  
 2nd Ab:  
 G&R HRP(H+L) 1:10,000

Exposure: 20s



RR641 staining Alpha smooth muscle Actin in HeLa cells by IF/ICC (immunofluorescence/immunocytochemistry). Cells were fixed with paraformaldehyde, permeabilized with 0.1% Triton X-100 and blocked with 10% goat serum for half an hour at room temperature. Samples were incubated with primary antibody (1:10,000) at 4°C. An Alexa Fluor® 488-conjugated Goat Anti-Rabbit IgG polyclonal was used as the secondary antibody (1:500). DAPI (blue) was used as the nuclear counter stain.

Control: PBS and secondary antibody, An Alexa Fluor® 488-conjugated Goat Anti-Rabbit IgG (1:500).



Overlay histogram showing HeLa cells stained with RR641 (Red). The cells were fixed with 4% paraformaldehyde (10 min) and then permeabilized with 0.1% TritonX-100 for 15 min. The cells were then incubated in the antibody (RR641, 1:1,000 dilution) in 1x PBS/1% BSA for 30 min at room temperature. The secondary antibody used was a Goat Anti-Rabbit Alexa Fluor® 488 (IgG H+L) at 1:2,000 dilution for 20 min at room temperature. Unlabelled sample (Black) was used as a control.

Product QC'd by:



For research use only. Not for use in diagnostic or therapeutic applications.