

CD20 Recombinant Rabbit Monoclonal Antibody Product Datasheet

Catalog# BX50134

Clone# BP6138

Predicted Molecular Wt: 33kDa
Species Cross-reactivity: Human
Applications: IHC-P

Purity: ProA affinity purified IgG
Form: Liquid
Swissprot ID: P11836

Background:

CD20 is a membrane-embedded 33kDa nonglycosylated phosphoprotein which play a role in B-cell activation, differentiation, and cell-cycle progression. CD20 is a restricted B-cell antigen and its clinical utility is greatest for identifying B-lineage non-Hodgkin's lymphomas, but it can also aid in the diagnosis of nodular lymphocyte predominance Hodgkin's disease and acute lymphoblastic neoplasms.

Subcellular location:

Membrane

Recommended method:

Heat induced epitope retrieval with Tris-EDTA buffer (pH 9.0), primary antibody incubate at RT (18°C-25°C) for 30 minutes.

Immunogen:

Synthetic peptide corresponding to CD20 residues within aa197-C terminal of CD20 was used as an immunogen.

Storage Buffer:

PBS 59%, Sodium azide 0.01%, Glycerol 40%, BSA 0.05%.

Storage conditions:

-20°C

Storage instructions:

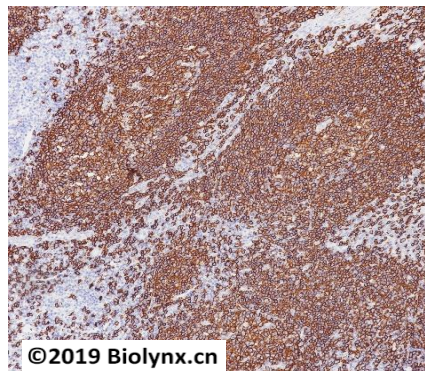
Shipped on blue ice. Upon delivery, aliquot, and store at -20°C. Avoid freeze / thaw cycles.

Recommended Dilutions:


IHC-P: 1:100-1:200

Background References:

1. N Johnson., et al. Blood 2009 113:3773-3780.
2. Clark EA., et al. Proc Natl Acad Sci U S A 1985;82:1766-1770.



Immunohistochemistry (Formalin/PFA-fixed paraffin-embedded sections) analysis of Tonsil tissue labelling CD20 with BP6138. Heat mediated antigen retrieval was performed using Tris/EDTA buffer pH 9.0

Product QC'd by: 

For research use only. Not for use in diagnostic or therapeutic applications.