

Myogenin

Recombinant Rabbit Monoclonal Antibody

Product Datasheet

Catalog# BX50133

Clone# BP6137

Predicted Molecular Wt: 32kDa
Species Cross-reactivity: Human
Applications: IHC-P

Purity: ProA affinity purified IgG
Form: Liquid
Swissprot ID: P15173

Background:

Myogenin belongs to a family of regulatory proteins essential for muscle development.

Myogenin is expressed on cells of skeletal muscle origin, and appears to be inversely related to the degree of cellular differentiation.

The antibody is a useful aid for classification of rhabdomyosarcomas and Wilms' tumors. No reactivity with Ewing's sarcoma/peripheral primitive neuroectodermal tumor, neuroblastoma, or adult skeletal muscle has been observed.

Subcellular location:

Nucleus

Recommended method:

Heat induced epitope retrieval with Tris-EDTA buffer (pH 9.0), primary antibody incubate at RT (18°C-25°C) for 30 minutes.

Immunogen:

Synthetic peptide corresponding to residues within aa100 to aa200 of Myogenin was used as an immunogen.

Storage Buffer:

PBS 59%, Sodium azide 0.01%, Glycerol 40%, BSA 0.05%.

Storage conditions:

-20°C

Storage instructions:

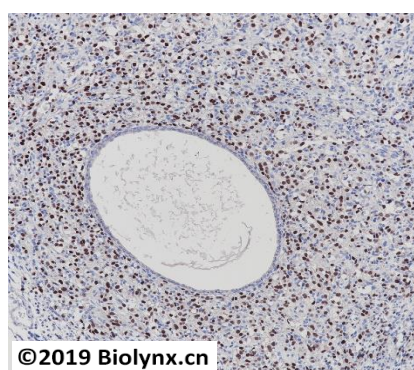
Shipped on blue ice. Upon delivery, aliquot, and store at -20°C. Avoid freeze / thaw cycles.

Recommended Dilutions:

IHC-P: 1:100-1:200

Background References:

- Combes AN et al. Genome Med 11:3 (2019).
- McClure MJ et al. Am J Physiol Cell Physiol 316:C876-C887 (2019).



Immunohistochemistry (Formalin/PFA-fixed paraffin-embedded sections) analysis of embryonal rhabdomyosarcoma (ERMS) labelling Myogenin with BP6137. Heat mediated antigen retrieval was performed using Tris/EDTA buffer pH 9.0.

Product QC'd by:



For research use only. Not for use in diagnostic or therapeutic applications.