

## Progesterone Receptor Recombinant Rabbit Monoclonal Antibody Product Datasheet

Catalog# BX50132

Clone# BP6136

**Predicted Molecular Wt:** 99kDa  
**Species Cross-reactivity:** Human  
**Applications:** IHC-P

**Purity:** ProA affinity purified IgG  
**Form:** Liquid  
**Swissprot ID:** P06401

### Background:

Progesterone is one of the central regulators of female reproduction. In breast development, progesterone is involved in the formation of lobular-alveolar structures and also affects differentiation in the breast by modulation of milk protein synthesis. The cellular effects of progesterone are mediated through progesterone receptors (PR). PR, a protein with 946 amino acids, is a ligand-activated transcription factor member of the steroid receptor super family of nuclear receptors. PR is predominantly expressed in female sex steroid responsive tissues such as the mammary gland, uterus and ovary but is also found in other tissues such as endocrine cells of the Langerhans' islets.

The estrogen receptor (ER) and PR status has been used for over 20 years as a predictor of breast carcinoma responsiveness to endocrine therapy and as a prognostic indicator for early recurrence.

### Subcellular location:

Nucleus

### Recommended method:

Heat induced epitope retrieval with Tris-EDTA buffer (pH 9.0), primary antibody incubate at RT (18°C-25°C) for 30 minutes.

### Immunogen:

Recombinant protein corresponding to residues within aa400-600 of progesterone receptor was used as an immunogen.

### Storage Buffer:

PBS 59%, Sodium azide 0.01%, Glycerol 40%, BSA 0.05%.

### Storage conditions:

-20°C

### Storage instructions:

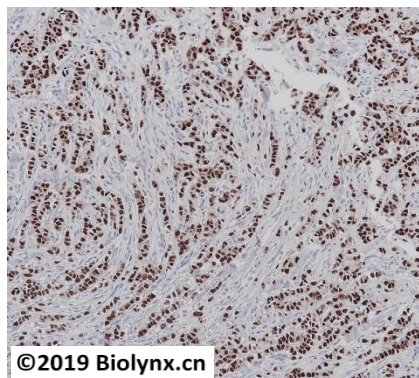
Shipped on blue ice. Upon delivery, aliquot, and store at -20°C. Avoid freeze / thaw cycles.

### Recommended Dilutions:


IHC-P: 1:100-1:200

### Background References:

1. Bardou V-J, Arpino G, Elledge RM, et al. J Clin Oncol 2003;21:1973-1979.
2. Elledge RM, Green S, Pugh R et al. Int J Cancer 2000;89:111-117.



Immunohistochemistry (Formalin/PFA-fixed paraffin-embedded sections) analysis of breast carcinoma tissue labelling Progesterone Receptor with BP6136. Heat mediated antigen retrieval was performed using Tris/EDTA buffer pH 9.0

Product QC'd by: 

**For research use only. Not for use in diagnostic or therapeutic applications.**