

## Insulin Mouse Monoclonal Antibody Product Datasheet

Catalog# BX50173

Clone# 2D11-H5

**Predicted Molecular Wt:** 11kDa  
**Species Cross-reactivity:** Human  
**Applications:** IHC-P

**Purity:** ProG affinity purified IgG  
**Form:** Liquid  
**Swissprot ID:** P01308

### Background:

Insulin is a hormone that regulates glucose homeostasis. It increases cell permeability to monosaccharides, amino acids and fatty acids, and it accelerates glycolysis, the pentose phosphate cycle, and glycogen synthesis in liver. It is synthesized in the beta cell of the pancreas. The antibody labels both normal and neoplastic insulin-producing cells. It is useful in identifying insulinoma.

### Subcellular location:

Cytoplasm

### Recommended method:

Heat induced epitope retrieval with Tris-EDTA buffer (pH 9.0), primary antibody incubate at RT (18°C-25°C) for 30 minutes.

### Storage Buffer:

PBS 59%, Sodium azide 0.01%, Glycerol 40%, BSA 0.05%.

### Storage conditions:

-20°C

### Storage instructions:

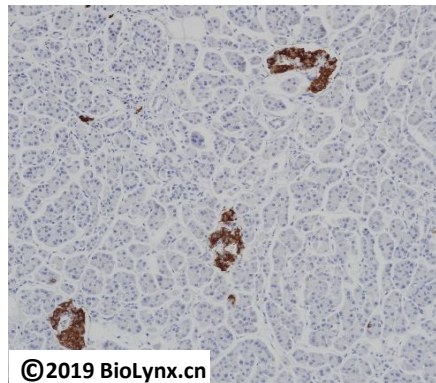
Shipped on blue ice. Upon delivery, aliquot, and store at -20°C. Avoid freeze / thaw cycles.

### Recommended Dilutions:

IHC-P: 1:100-1:200

### Background References:

1. Biester Torben, et al. *Pediatr Diabetes*, 2020.
2. Evans Marc, et al. *Adv Ther*, 2020.



Immunohistochemistry (Formalin/PFA-fixed paraffin-embedded sections) analysis of human pancreas tissue labelling Insulin with 2D11-H5. Heat mediated antigen retrieval was performed using Tris/EDTA buffer pH 9.0

Product QC'd by:



For research use only. Not for use in diagnostic or therapeutic applications.