

CD146 Recombinant Rabbit Monoclonal Antibody Product Datasheet

Catalog# BX50184

Clone# BP6162

Predicted Molecular Wt: 72kDa
Species Cross-reactivity: Human
Applications: IHC-P

Purity: ProA affinity purified IgG
Form: Liquid
Swissprot ID: P43121

Background:

CD146 plays a role in cell adhesion, and in cohesion of the endothelial monolayer at intercellular junctions in vascular tissue. Its expression may allow melanoma cells to interact with cellular elements of the vascular system, thereby enhancing hematogeneous tumor spread. Could be an adhesion molecule active in neural crest cells during embryonic development. Acts as surface receptor that triggers tyrosine phosphorylation of FYN and PTK2/FAK1, and a transient increase in the intracellular calcium concentration

Subcellular location:

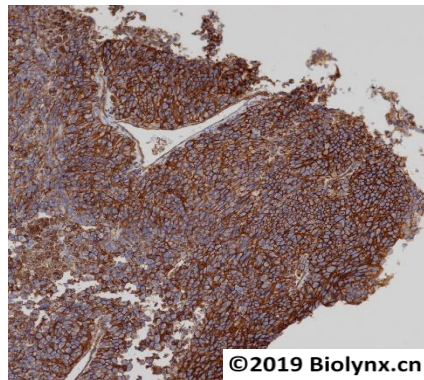
Membrane

Recommended method:

Heat induced epitope retrieval with Tris-EDTA buffer (pH 9.0), primary antibody incubate at RT (18°C-25°C) for 30 minutes.

Immunogen:

Full length native protein (purified) corresponding to Human Human IgG.



Immunohistochemistry (Formalin/PFA-fixed paraffin-embedded sections analysis of melanoma labelling CD146 with BP6162. Heat mediated antigen retrieval was performed using Tris/EDTA buffer pH 9.0

Storage Buffer:

PBS 59%, Sodium azide 0.01%, Glycerol 40%, BSA 0.05%.

Storage conditions:

-20°C

Storage instructions:


Shipped on blue ice. Upon delivery, aliquot, and store at -20°C. Avoid freeze / thaw cycles.

Recommended Dilutions:

IHC-P: 1:100-1:200

Background References:

1. Shih, I.M. (1999) J Pathol 189, 4-11.
2. Wang, P. et al. (2013) Mol Cell Biol 33, 3689-99.

Product QC'd by: 

For research use only. Not for use in diagnostic or therapeutic applications.



Order: 0571-88177686
Fax: 0571-88177681
Support: support@biolynx.cn