

IgG Recombinant Rabbit Monoclonal Antibody Product Datasheet

Catalog# BX50183

Clone# BP6161

Predicted Molecular Wt: 36kD
Species Cross-reactivity: Human
Applications: IHC-P

Purity: ProA affinity purified IgG
Form: Liquid
Swissprot ID: P55899

Background:

Immunoglobulin G (IgG) is an antibody isotype secreted by plasma cells and composed of four peptide chains – two identical heavy chains and two identical light chains arranged in a Y-shape typical of antibody monomers. In humans, IgG consists of four subclasses that differ only marginally in their amino acid composition. Representing approximately 75% of serum immunoglobulins in humans, IgG is the most abundant antibody isotype found in the circulation. Anti-IgG had been proven useful in the assessment of renal biopsies, autoimmune disorders, in the identification of plasma cell neoplasms and in non-Hodgkin lymphomas. The ratio of IgG4+ plasma cells to IgG+ plasma cells has been considered important in making a diagnosis of IgG4-related disorders.

Subcellular location:

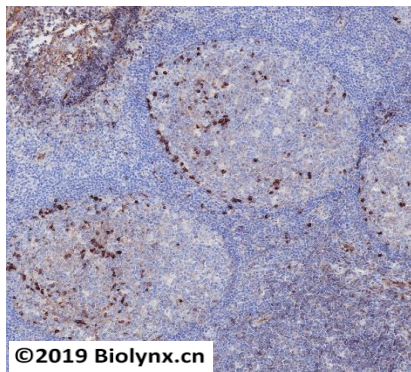
Cytoplasm

Recommended method:

Heat induced epitope retrieval with Tris-EDTA buffer (pH 9.0), primary antibody incubate at RT (18°C-25°C) for 30 minutes.

Immunogen:

Full length native protein (purified) corresponding to Human Human IgG.



Immunohistochemistry (Formalin/PFA-fixed paraffin-embedded sections analysis of human tonsil tissue labelling IgG with BP6161. Heat mediated antigen retrieval was performed using Tris/EDTA buffer pH 9.0

Storage Buffer:

PBS 59%, Sodium azide 0.01%, Glycerol 40%, BSA 0.05%.

Storage conditions:

-20°C

Storage instructions:


Shipped on blue ice. Upon delivery, aliquot, and store at -20°C. Avoid freeze / thaw cycles.

Recommended Dilutions:

IHC-P: 1:100-1:200

Background References:

1. Leong AS, et al. *Geenwich Medical Media Ltd.* 1999; 217-219.
2. Ando K, et al. *Intern Med.* 2000; 39:170-5.

Product QC'd by: 

For research use only. Not for use in diagnostic or therapeutic applications.