

## SDHB Recombinant Rabbit Monoclonal Antibody Product Datasheet

Catalog# BX50182

Clone# BP6160

**Predicted Molecular Wt:** 32kDa  
**Species Cross-reactivity:** Human  
**Applications:** IHC-P

**Purity:** ProA affinity purified IgG  
**Form:** Liquid  
**Swissprot ID:** P21912

### Background:

Succinate dehydrogenase B (SDHB) is an iron-sulfur subunit of mitochondrial complex II, a key component of the citric acid cycle and the electron transport chain, a respiratory complex that catalyzes the oxidation of succinate in the mitochondrial membrane. Many cancers are generally positive for SDHB, including renal cell carcinomas and gastrointestinal stromal tumors. A subset of RCC and GIST tumors that are associated with SDH mutations, Carney-Stratakis Syndrome or Carney Triad exhibit a loss of SDHB expression.

### Subcellular location:

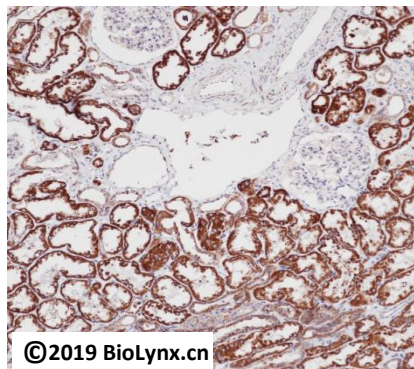
Cytoplasm

### Recommended method:

Heat induced epitope retrieval with Tris-EDTA buffer (pH 9.0), primary antibody incubate at RT (18°C-25°C) for 30 minutes.

### Immunogen:

Synthetic peptide corresponding to residues in Human SDHB was used as an immunogen.



Immunohistochemistry (Formalin/PFA-fixed paraffin-embedded sections) analysis of human kidney tissue labelling SDHB with BP6160. Heat mediated antigen retrieval was performed using Tris/EDTA buffer pH 9.0

### Storage Buffer:

PBS 59%, Sodium azide 0.01%, Glycerol 40%, BSA 0.05%.

### Storage conditions:

-20°C

### Storage instructions:

Shipped on blue ice. Upon delivery, aliquot, and store at -20°C. Avoid freeze / thaw cycles.

### Recommended Dilutions:

IHC-P: 1:100-1:200

### Background References:

1. Chang HC et al. Redox Biol 20:321-333 (2019).
2. Her YF et al. PLoS One 10:e0127471 (2015).

Product QC'd by:



For research use only. Not for use in diagnostic or therapeutic applications.