

**CA125**  
**Recombinant Rabbit Monoclonal Antibody**  
**Product Datasheet**

Catalog# BX50009

Clone# BP6014

**Predicted Molecular Wt:** 1519kDa

**Species Cross-reactivity:** Human

**Applications:** IHC-P

**Purity:** ProA affinity purified IgG

**Form:** Liquid

**Swissprot ID:** Q8WXI7

**Background:**

CA125 (cancer antigen 125, carcinoma antigen 125, or carbohydrate antigen 125) also known as mucin 16, is a member of the mucin family glycoproteins. CA125 is a component of the ocular surface (including the cornea and conjunctiva), the respiratory tract and the female reproductive tract epithelia. Since CA125 is highly glycosylated it creates a hydrophilic environment that acts as a lubricating barrier against foreign particles and infectious agents on the apical membrane of epithelial cells.

CA125 reacts with both normal tissues and neoplasms of fallopian tube, endometrium, endocervix and mesothelioma. It does not react with colon cancer. Normal tissues such as breast, liver, skin, kidney and spleen are also negative. Studies have shown that CA125 reacts with approximately 80% of epithelial ovarian neoplasms of serous, endometrioid, clear cell and undifferentiated types. No reactivity has been shown for mucinous ovarian tumors or in germ cell or hematopoietic tumors. This antibody is a useful aid for classification of a variety of tumors, such as some adenocarcinomas of the colon, breast carcinomas, malignant mesothelioma, uterine adenomatoid tumor, lung bronchoalveolar carcinoma, and ovarian endometrioid and serous carcinomas.

**Subcellular location:**

Membrane

**Recommended method:**

Heat induced epitope retrieval with Tris-EDTA buffer (pH 9.0), primary antibody incubate at RT (18°C-25°C) for 30 minutes.

**Immunogen:**

Synthetic peptide corresponding to CA125 residues within aa12201-12300 of CA125 was used as an immunogen.

**Storage Buffer:**

PBS 59%, Sodium azide 0.01%, Glycerol 40%, BSA 0.05%.

**Storage conditions:**

-20°C

**Storage instructions:**

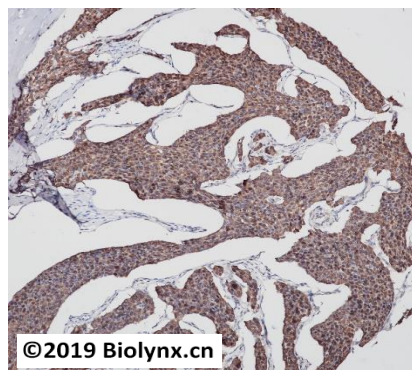
Shipped on blue ice. Upon delivery, aliquot, and store at -20°C. Avoid freeze / thaw cycles.

**Recommended Dilutions:**


IHC-P: 1:100-1:200

**Background References:**

1. Prat A., et al. Ann Oncol. 2008 Feb;19(2):327-31.
2. Tornos C., et al. Am J Surg Pathol. 2005 Nov;29(11):1482-9.



Immunohistochemistry (Formalin/PFA-fixed paraffin-embedded sections) analysis of breast cancer labelling CA125 with BP6014. Heat mediated antigen retrieval was performed using Tris/EDTA buffer pH 9.0.

Product QC'd by: 

**For research use only. Not for use in diagnostic or therapeutic applications.**