

hCG beta Recombinant Rabbit Monoclonal Antibody Product Datasheet

Catalog# BX50221

Clone# BP6198

Predicted Molecular Wt: 18kDa
Species Cross-reactivity: Human
Applications: IHC-P

Purity: ProA affinity purified IgG
Form: Liquid
Swissprot ID: PODN86

Background:

Beta subunit of the human chorionic gonadotropin (hCG). hCG is a complex glycoprotein composed of two glycosylated subunits alpha and beta which are non-covalently associated. The alpha subunit is identical to those in the pituitary gonadotropin hormones (LH, FSH and TSH). The beta subunits are distinct in each of the hormones and confer receptor and biological specificity. Has an essential role in pregnancy and maternal adaptation. Stimulates the ovaries to synthesize the steroids that are essential for the maintenance of pregnancy.

Subcellular location:

Cytoplasm

Recommended method:

Heat induced epitope retrieval with Tris-EDTA buffer (pH 9.0), primary antibody incubate at RT (18°C-25°C) for 30 minutes.

Immunogen:

Full length protein corresponding to Human hCG beta

Storage Buffer:

PBS 59%, Sodium azide 0.01%, Glycerol 40%, BSA 0.05%.

Storage conditions:

-25°C to -18°C

Storage instructions:

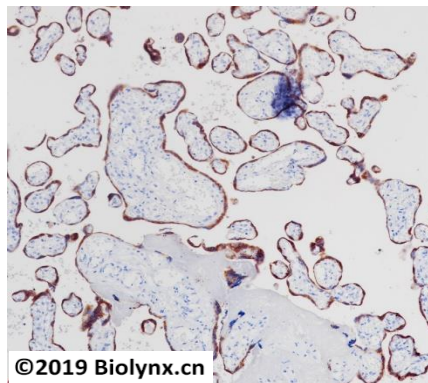
Shipped on blue ice. Upon delivery, aliquot, and store at -25°C to -18°C. Avoid freeze / thaw cycles.

Recommended Dilutions:

IHC-P: 1:100-1:200

Background References:

1. Yang Y et al. Derivation of Pluripotent Stem Cells with In Vivo Embryonic and Extraembryonic Potency. Cell 169:243-257



Immunohistochemistry (Formalin/PFA-fixed paraffin-embedded sections) analysis of placenta tissue labelling hCG beta with BP6198. Heat mediated antigen retrieval was performed using Tris/EDTA buffer pH 9.0



Product QC'd by:

For research use only. Not for use in diagnostic or therapeutic applications.