

## COL4A5 Recombinant Rabbit Monoclonal Antibody Product Datasheet

Catalog# BX50229

Clone# BP6206

**Predicted Molecular Wt:** 161kDa

**Species Cross-reactivity:** Human

**Applications:** IHC-P

**Purity:** ProA affinity purified IgG

**Form:** Liquid

**Swissprot ID:** P29400

### Background:

Type IV collagen is the major structural component of glomerular basement membranes (GBM), forming a 'chicken-wire' meshwork together with laminins, proteoglycans and entactin/nidogen.

Deletions covering the N-terminal regions of COL4A5 and COL4A6, which are localized in a head-to-head manner, are found in the chromosome Xq22.3 centromeric deletion syndrome. This results in a phenotype with features of diffuse leiomyomatosis and Alport syndrome (DL-ATS).

### Subcellular location:

basement membrane

### Recommended method:

Heat induced epitope retrieval with Tris-EDTA buffer (pH 9.0), primary antibody incubate at RT (18°C-25°C) for 30 minutes.

### Immunogen:

Recombinant fragment with COL4A5. This information is proprietary to Biolynx and/or its suppliers.

### Storage Buffer:

PBS 59%, Sodium azide 0.01%, Glycerol 40%, BSA 0.05%.

### Storage conditions:

-25°C to -18°C

### Storage instructions:

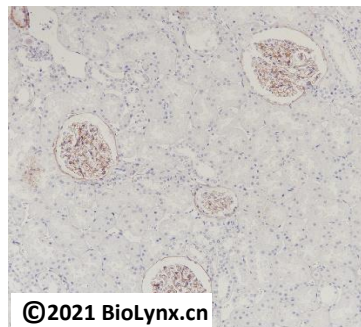
Shipped on blue ice. Upon delivery, aliquot, and store at -25°C to -18°C. Avoid freeze / thaw cycles.

### Recommended Dilutions:

IHC-P: 1:100-1:200

### Background References:

1. Tsugio Seki et al. Histochem Cell Biol (1998) 110:359-366
2. Yoshioka K et al. Am. J. Pathol (1994) . 144: 986-996



Immunohistochemistry (Formalin/PFA-fixed paraffin-embedded sections) analysis of human kidney tissue labelling COL4A5 with BP6206. Heat mediated antigen retrieval was performed using Tris/EDTA buffer pH 9.0

Product QC'd by: 

For research use only. Not for use in diagnostic or therapeutic applications.