

GATA-3 Recombinant Rabbit Monoclonal Antibody Product Datasheet

Catalog# BX50252

Clone# BP6229

Predicted Molecular Wt: 48kDa
Species Cross-reactivity: Human
Applications: IHC-P

Purity: ProA affinity purified IgG
Form: Liquid
Swissprot ID: P23771

Background:

GATA binding protein 3 or GATA-3, is a zinc finger transcription factor and plays an important role in promoting and directing cell proliferation, development, and differentiation in many tissues and cell types.

GATA-3 is one of the three genes mutated in 10% of breast cancers. Nuclear expression of GATA-3 in breast cancer is considered a marker of luminal cancer in ER+ cancer and luminal androgen responsive cancer in ER-/AR+ tumors. It is highly coexpressed with FOXA1 and serves as negative predictor of basal subtype and HER-2 and is also considered a strong predictor of taxane and platin salts insensitivity.

GATA-3 expression is found in urothelial carcinoma, especially in invasive and high grade tumors. Therefore, GATA-3 can be used in a panel of antibodies for diagnosis of unknown primary carcinoma, when carcinomas of the breast or bladder are a possibility. Studies have also shown the utility of GATA-3 in differentiating urothelial carcinoma from prostate adenocarcinoma and squamous cell carcinomas of the uterine, cervix, anus and lung.

Subcellular location:

Nucleus

Recommended Method:

Heat induced epitope retrieval with Tris-EDTA buffer (pH 9.0), primary antibody incubate at RT (18°C-25°C) for 30 minutes.

Immunogen:

Synthetic peptide. This information is proprietary to Biolynx.

Storage Buffer:

PBS 59%, Sodium azide 0.01%, Glycerol 40%, BSA 0.05%.

Storage Conditions:

-25°C to -18°C

Shipment Instructions:

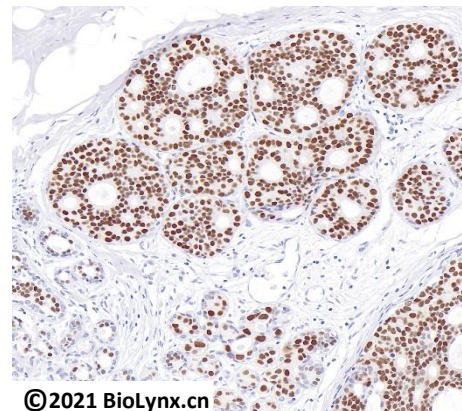
Shipped on blue ice. Upon delivery store at -25°C to -18°C. Avoid freeze / thaw cycles.

Recommended Dilution:

IHC-P: 1:100-1:200

Background References:

- Voduc D, et al. Cancer Epidemiol Biomarkers Prev. 2008 Feb;17(2):365-73.
- Miettinen M, et al. Am J Surg Pathol. 2014 Jan; 38(1): 13-22.



Immunohistochemistry (Formalin/PFA-fixed paraffin-embedded sections) analysis of invasive ductal carcinoma of the breast labelling GATA-3 with BP6229.

Product QC'd by: 

For research use only. Not for use in diagnostic or therapeutic applications.