

PRAME Recombinant Rabbit Monoclonal Antibody Product Datasheet

Catalog# BX50271

Clone# BP6248

Predicted Molecular Wt: 58kDa
Species Cross-reactivity: Human
Applications: IHC-P

Purity: ProA affinity purified IgG
Form: Liquid
Swissprot ID: P78395

Background:

Cancer/testis antigens (CTAs) are a family of more than 100 proteins whose normal expression is largely restricted to immune privileged germ cells of the testis, ovary, and trophoblast cells of the placenta. Although most normal somatic tissues are void of CTA expression, due to epigenetic silencing of gene expression, their expression is upregulated in a wide variety of human solid and liquid tumors.

PRAME (preferentially expressed antigen in melanoma) is a cancer/testis antigen not normally expressed in any tissues except testis, but is upregulated in tumors. PRAME is expressed in melanoma cells and is recognized by cytolytic T-cells. It is also upregulated in other diseases, such as synovial sarcoma, NSCLC, and breast cancer, where it is thought to contribute to tumorigenesis and metastasis. PRAME is also highly expressed in liquid tumors such as AML and can be predictive of clinical outcome in some circumstances.

PRAME and other cancer/testis antigens are currently being pursued as novel immunotherapy targets and diagnostic biomarkers.

Subcellular location:

Nucleus

Recommended Method:

Heat induced epitope retrieval with Tris-EDTA buffer (pH 9.0), primary antibody incubate at RT (18°C-25°C) for 30 minutes.

Immunogen:

Recombinant protein fragment of human PRAME was used as an immunogen.

Storage Buffer:

PBS 59%, Sodium azide 0.01%, Glycerol 40%, BSA 0.05%.

Storage Conditions:

-25°C to -18°C

Shipment Instructions:

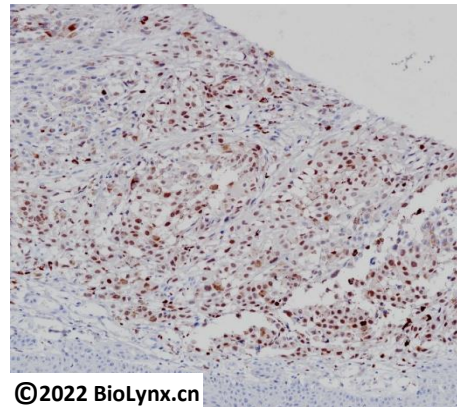
Shipped on blue ice. Upon delivery store at -25°C to -18°C. Avoid freeze / thaw cycles.

Recommended Dilution:

IHC-P: 1:100-1:200

Background References:

1. Qin, Y.Z. et al. (2017) Oncol Lett 13, 2823-2830.
2. Iura, K. et al. (2017) Hum Pathol 61, 130-139.



Immunohistochemistry (Formalin/PFA-fixed paraffin-embedded sections) analysis of human malignant melanoma labelling PRAME with BP6248.

Product QC'd by:



For research use only. Not for use in diagnostic or therapeutic applications.