

Stathmin Recombinant Rabbit Monoclonal Antibody Product Datasheet

Catalog# BX50264

Clone# BP6241

Predicted Molecular Wt: 17kDa
Species Cross-reactivity: Human
Applications: IHC-P

Purity: ProA affinity purified IgG
Form: Liquid
Swissprot ID: P16949

Background:

Stathmin /oncoprotein 18, also known as STMN1, performs an important function in regulating rapid microtubule remodeling of the cytoskeleton in response to the cell's needs. Regulation of stathmin is cell cycle dependent and controlled by the cell's protein kinases in response to specific cell signals. Stathmin can cause uncontrolled cell proliferation when mutated and not functioning properly.

Overexpression of Stathmin has been associated with tumor progression in endometrial carcinomas, ovarian cancer and oral squamous-cell carcinoma. Stathmin has been found to be positive in 29% of cervical intraepithelial neoplasia (CINs) with differential expression based on the grade of the lesion as 9% being CIN1, 45% CIN2, and 93% CIN3; whereas, p16 staining of the same cases was positive in 80% of CINs with 71% CIN1, 100% CIN2, and 94% CIN3. Stathmin shows similar sensitivity for CIN3 to anti-p16 (93% vs 94%) although it drops off for CIN2 (73% vs 96%). The specificity of stathmin antibody for both CIN2-3 (94%) and CIN3 (89%) is higher than that of anti-p16 (44% and 39%, respectively). Therefore, Stathmin antibody has major potential as a diagnostic marker in CIN classification over anti-p16 and it is valuable to distinguish CIN3 from the majority of low-grade precursors and negative/reactive cervical biopsies.

Subcellular location:

Membrane/cytoplasm

Recommended Method:

Heat induced epitope retrieval with Tris-EDTA buffer (pH 9.0), primary antibody incubate at RT (18°C-25°C) for 30 minutes.

Immunogen:

Synthetic peptide. This information is proprietary to Biolynx.

Storage Buffer:

PBS 59%, Sodium azide 0.01%, Glycerol 40%, BSA 0.05%.

Storage Conditions:

-25°C to -18°C

Shipment Instructions:

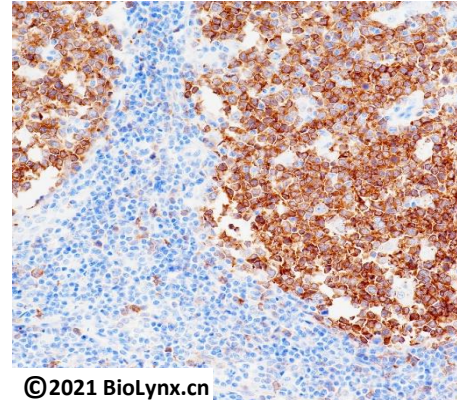
Shipped on blue ice. Upon delivery store at -25°C to -18°C. Avoid freeze / thaw cycles.

Recommended Dilution:

IHC-P: 1:100-1:200

Background References:

1. Atweh, G., et al. J Cellular Biochemistry 2004; 93 (2): 242-250.
2. Howitt B, et al.: Am J Surg Pathol 2013, 37:89-97



©2021 Biolynx.cn

Immunohistochemistry (Formalin/PFA-fixed paraffin-embedded sections) analysis of tonsil labelling Stathmin with BP6241.

Product QC'd by:



For research use only. Not for use in diagnostic or therapeutic applications.