

## SF-1 Recombinant Rabbit Monoclonal Antibody Product Datasheet

Catalog# BX50259

Clone# BP6236

**Predicted Molecular Wt:** 52kDa  
**Species Cross-reactivity:** Human  
**Applications:** IHC-P

**Purity:** ProA affinity purified IgG  
**Form:** Liquid  
**Swissprot ID:** Q13285

### Background:

SF-1 is a transcriptional activator that essential for sexual differentiation and formation of the primary steroidogenic tissues. It also activated by the phosphorylation of NR5A1 by HIPK3 leading to increased steroidogenic gene expression upon cAMP signaling pathway stimulation.

SF-1 is highly expressed in the adrenal cortex, ovary, testis, spleen.

SF-1 is generally used for diagnosis of sex cord-stromal tumors and differential diagnosis of adrenocortical adenoma and pheochromocytoma.

### Subcellular location:

Nucleus

### Recommended Method:

Heat induced epitope retrieval with Tris-EDTA buffer (pH 9.0), primary antibody incubate at RT (18°C-25°C) for 30 minutes.

### Immunogen:

Full length protein corresponding to Human SF-1.

### Storage Buffer:

PBS 59%, Sodium azide 0.01%, Glycerol 40%, BSA 0.05%.

### Storage Conditions:

-25°C to -18°C

### Shipment Instructions:

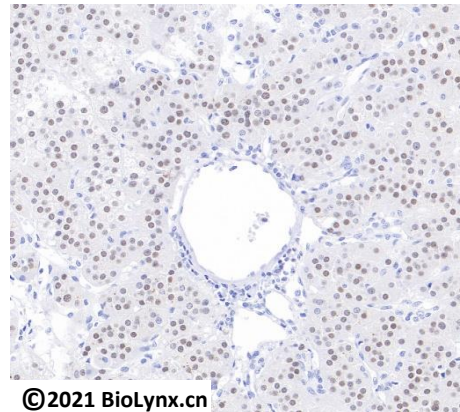
Shipped on blue ice. Upon delivery store at -25°C to -18°C. Avoid freeze / thaw cycles.

### Recommended Dilution:

IHC-P: 1:100-1:200

### Background References:

1. Lan H.-C. Mol. Cell. Biol. 27:2027-2036(2007)



©2021 BioLynx.cn

Immunohistochemistry (Formalin/PFA-fixed paraffin-embedded sections) analysis of adrenocortical adenoma labelling SF-1 with BP6236.

Product QC'd by:



For research use only. Not for use in diagnostic or therapeutic applications.