

PSMA Recombinant Rabbit Monoclonal Antibody Product Datasheet

Catalog# BX50299

Clone# BP6276

Predicted Molecular Wt: 84kDa
Species Cross-reactivity: Human
Applications: IHC-P

Purity: ProA affinity purified IgG
Form: Liquid
Swissprot ID: Q04609

Background:

PSMA is a type II transmembrane protein in the M28 family that combines folate hydrolase and N-acetylation α Associated acid dipeptidase activity. PSMA was originally found in the LNCaP cell line, which originated from lymph node metastasis of prostate cancer.

Research studies have shown that PSMA is a well-defined marker for prostate cancer and is also expressed in other tissues such as the kidney, liver, and bladder.

PSMA is used as a diagnostic and prognostic indicator of prostate cancer, and as a possible marker for various neurological disorders such as schizophrenia, Alzheimer disease and Huntington disease.

Subcellular location:

Cytoplasm&Membrane

Recommended Method:

Heat induced epitope retrieval with Tris-EDTA buffer (pH 9.0), primary antibody incubate at RT (18°C-25°C) for 30 minutes.

Immunogen:

Synthetic peptide. This information is proprietary to Biolynx.

Storage Buffer:

PBS 59%, Sodium azide 0.01%, Glycerol 40%, BSA 0.05%.

Storage Conditions:

-25°C to -18°C

Shipment Instructions:

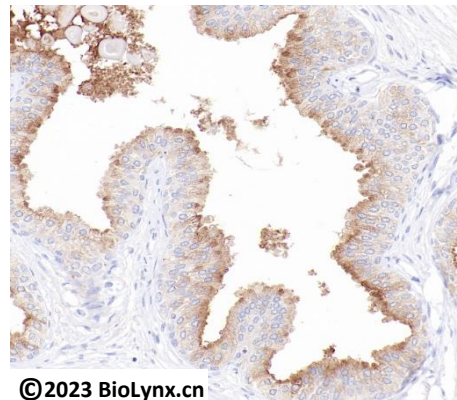
Shipped on blue ice. Upon delivery store at -25°C to -18°C. Avoid freeze / thaw cycles.

Recommended Dilution:


IHC-P: 1:100-1:200

Background References:

1. Mease, R.C. (2013) Curr Top Med Chem 13, 951-62.
2. Frigerio, B. (2013) Eur J Cancer 49, 2223-32.



Immunohistochemistry (Formalin/PFA-fixed paraffin-embedded sections) analysis of human prostate labelling PSMA with BP6276.

Product QC'd by: 

For research use only. Not for use in diagnostic or therapeutic applications.