

CDH17 Recombinant Rabbit Monoclonal Antibody Product Datasheet

Catalog# BX50289

Clone# BP6266

Predicted Molecular Wt: 92kDa
Species Cross-reactivity: Human
Applications: IHC-P

Purity: ProA affinity purified IgG
Form: Liquid
Swissprot ID: Q12864

Background:

CDH17 may have a role in the morphological organization of liver and intestine. Involved in intestinal peptide transport.

CDH17 expressed in the gastrointestinal tract and pancreatic duct. Not detected in kidney, lung, liver, brain, adrenal gland and skin.

CDH17 is a highly specific marker in colon cancer and is a more sensitive marker than CDX2 and CK20. Overexpression of CDH17 correlates to poor prognosis in patients with epithelial ovarian cancer. CDH17 may be helpful for early diagnosis of Barrett's esophagus. CDH17 has been shown to be a useful marker for distinguishing between primary urinary bladder adenocarcinoma and urothelial carcinoma with glandular differentiation.

Subcellular location:

Membrane

Recommended Method:

Heat induced epitope retrieval with Tris-EDTA buffer (pH 9.0), primary antibody incubate at RT (18°C-25°C) for 30 minutes.

Immunogen:

Recombinant protein fragment of CDH17 was used as an immunogen. This information is proprietary to Biolynx.

Storage Buffer:

PBS 59%, Sodium azide 0.01%, Glycerol 40%, BSA 0.05%.

Storage Conditions:

-25°C to -18°C

Shipment Instructions:

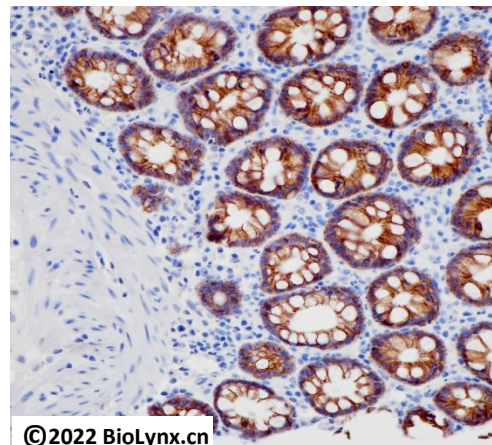
Shipped on blue ice. Upon delivery store at -25°C to -18°C. Avoid freeze / thaw cycles.

Recommended Dilution:

IHC-P: 1:100-1:200

Background References:

1. PMID: 8153632



Immunohistochemistry (Formalin/PFA-fixed paraffin-embedded sections) analysis of human colon labelling CDH17 with BP6266.

Product QC'd by:



For research use only. Not for use in diagnostic or therapeutic applications.