

## Claudin 6 Recombinant Rabbit Monoclonal Antibody Product Datasheet

Catalog# BX50297

Clone# BP6274

**Predicted Molecular Wt:** 23kDa  
**Species Cross-reactivity:** Human  
**Applications:** IHC-P

**Purity:** ProA affinity purified IgG  
**Form:** Liquid  
**Swissprot ID:** P56747

### Background:

Claudin-6 is a member of the CLDN family that is expressed in epithelial cell sheets. Downregulation of Claudin-6 has been reported in breast invasive ductal carcinoma associated with lymphatic metastasis which may point to a function of Claudin-6 as a tumor suppressor. Claudin-6 is reported to play a role in inhibiting malignancy of breast cancer cells by inducing apoptosis, inhibiting proliferation and migration.

Claudin6 is rarely expressed in normal tissue species, but is highly expressed in tumor cells, especially in ovarian cancer.

### Subcellular location:

Membrane & Cytoplasm

### Recommended Method:

Heat induced epitope retrieval with Tris-EDTA buffer (pH 9.0), primary antibody incubate at RT (18°C-25°C) for 30 minutes.

### Immunogen:

Synthetic peptide. This information is proprietary to Biolynx.

### Storage Buffer:

PBS 59%, Sodium azide 0.01%, Glycerol 40%, BSA 0.05%.

### Storage Conditions:

-25°C to -18°C

### Shipment Instructions:

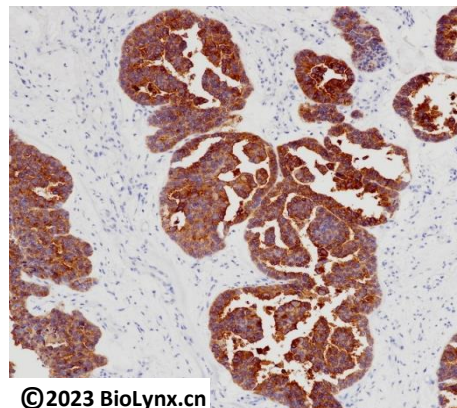
Shipped on blue ice. Upon delivery store at -25°C to -18°C. Avoid freeze / thaw cycles.

### Recommended Dilution:

IHC-P: 1:100-1:200

### Background References:

1. Shin, K. et al. (2006) Annu Rev Cell Dev Biol 22, 207-35.
2. Hewitt, K.J. et al. (2006) BMC Cancer 6, 186.



©2023 Biolynx.cn

Immunohistochemistry (Formalin/PFA-fixed paraffin-embedded sections) analysis of human ovarian cancer labelling Claudin 6 with BP6274.

Product QC'd by:



For research use only. Not for use in diagnostic or therapeutic applications.