

## CLPS Recombinant Rabbit Monoclonal Antibody Product Datasheet

Catalog# BX50304

Clone# BP6281

**Predicted Molecular Wt:** 12kDa  
**Species Cross-reactivity:** Human  
**Applications:** IHC-P

**Purity:** ProA affinity purified IgG  
**Form:** Liquid  
**Swissprot ID:** P04118

### Background:

CLPS (colipase) belongs to the colipase family. Structural studies of the complex and of colipase alone have revealed the functionality of its architecture. It is a small protein with five conserved disulphide bonds. Structural analogies have been recognised between a developmental protein, the pancreatic lipase C-terminal domain, the N-terminal domains of lipoxygenases and the C-terminal domain of alpha-toxin. Colipase can only be detected in pancreatic acinar cells, suggesting regulation of expression by tissue-specific elements. Colipase functions as a cofactor for pancreatic triglyceride lipase for the efficient hydrolysis of dietary lipid. Its expression is increased by secretin and dietary fats. Arg92Cys polymorphism in this gene is linked with increased susceptibility to type II diabetes. This polymorphism reduces functionality against long-chain triglycerides, which might be a possible cause of type II diabetes.

### Subcellular location:

Cytoplasm(Secreted)

### Recommended Method:

Heat induced epitope retrieval with Tris-EDTA buffer (pH 9.0), primary antibody incubate at RT (18°C-25°C) for 30 minutes.

### Immunogen:

Recombinant Human CLPS / Colipase protein. This information is proprietary to Biolynx.

### Storage Buffer:

PBS 59%, Sodium azide 0.01%, Glycerol 40%, BSA 0.05%.

### Storage Conditions:

-25°C to -18°C

### Shipment Instructions:

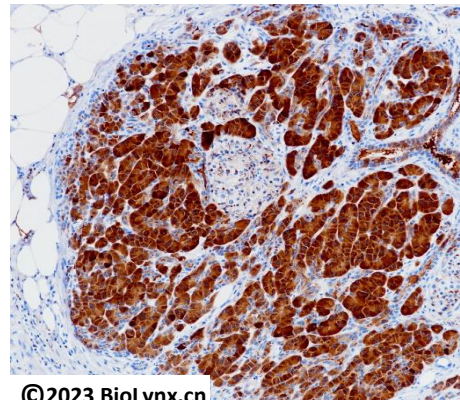
Shipped on blue ice. Upon delivery store at -25°C to -18°C. Avoid freeze / thaw cycles.

### Recommended Dilution:

IHC-P: 1:100-1:200


### Background References:

1. H F Sims et al. Biochemistry 11;31(31):7120-5.
2. Verger R et al. Biochim Biophys Acta. 1441(2-3):173-84.



©2023 Biolynx.cn

Immunohistochemistry (Formalin/PFA-fixed paraffin-embedded sections) analysis of human pancreas labelling CLPS with BP6281.

Product QC'd by: 

For research use only. Not for use in diagnostic or therapeutic applications.