

## PLA2R Recombinant Rabbit Monoclonal Antibody Product Datasheet

Catalog# BX50307

Clone# BP6284

**Predicted Molecular Wt:** 169kDa  
**Species Cross-reactivity:** Human  
**Applications:** IHC-P

**Purity:** ProA affinity purified IgG  
**Form:** Liquid  
**Swissprot ID:** Q13018

### Background:

M-type phospholipase A2 receptor(PLA2R) , acts as a receptor for phospholipase sPLA2-IB/PLA2G1B but not sPLA2-IIA/PLA2G2A. Binding of sPLA2-IB/PLA2G1B induces various effects depending on the cell type, such as activation of the mitogen-activated protein kinase (MAPK) cascade to induce cell proliferation, the production of lipid mediators, selective release of arachidonic acid in bone marrow-derived mast cells. In podocytes, binding of sPLA2-IB/PLA2G1B can regulate podocyte survival and glomerular homeostasis.

PLA2R is highly expressed in podocytes in human glomeruli, also expressed in pancreas, amnion, choriondecidua and placenta.

PLA2R was identified as a major target antigen involved in idiopathic membranous nephropathy in adults. Circulating autoantibodies against PLA2R were found in 70 to 80% of patients with idiopathic membranous nephropathy . It has been suggested that the serum level of PLA2R autoantibody could be used for the diagnosis of idiopathic membranous nephropathy and for the monitoring of response to treatment.

### Subcellular location:

Membranous

### Recommended Method:

Heat induced epitope retrieval with Tris-EDTA buffer (pH 9.0), primary antibody incubate at RT (18°C-25°C) for 30 minutes.

### Immunogen:

Synthetic peptide. This information is proprietary to Biolynx.

### Storage Buffer:

PBS 59%, Sodium azide 0.01%, Glycerol 40%, BSA 0.05%.

### Storage Conditions:

-25°C to -18°C

### Shipment Instructions:

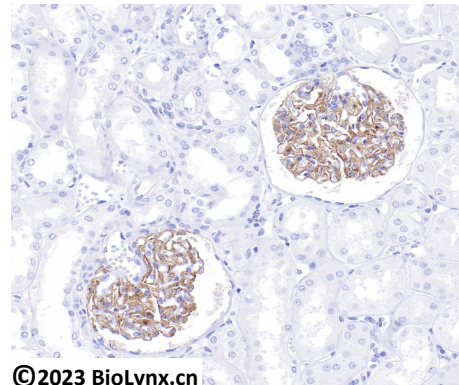
Shipped on blue ice. Upon delivery store at -25°C to -18°C. Avoid freeze / thaw cycles.

### Recommended Dilution:


IHC-P: 1:100-1:200

### Background References:

1. Beck LH Jr, et al. *Kidney Int* 77:765-770, 2010.
2. R.J. Glassock. *Contrib Nephrol*, 181:131-142,2013.



Immunohistochemistry (Formalin/PFA-fixed paraffin-embedded sections) analysis of human glomeruli tissue sections labeling PLA2R with BP6284.

Product QC'd by: 

For research use only. Not for use in diagnostic or therapeutic applications.