

CD15 Mouse Monoclonal Antibody Product Datasheet

Catalog# BX50140

Clone# MMA

Predicted Molecular Wt: 59kDa
Species Cross-reactivity: Human
Applications: IHC-P

Purity: Affinity purified IgM
Form: Liquid
Swissprot ID: P22083

Background:

CD15 is present on greater than 90% of granulocytes including neutrophils and eosinophils, and to a lesser degree, on monocytes. CD15 is expressed in Reed-Sternberg cells of Hodgkin's disease (of the nodular sclerosis, mixed cellularity and lymphocyte-depleted subtypes), and certain types of epithelial cells. It is generally agreed that the Reed-Sternberg cell variants in lymphocyte-predominant Hodgkin's disease are not reactive with CD15. Positive staining for CD15 combined with a negative reaction for lymphocytic markers may provide support for Hodgkin's disease.

Subcellular location:

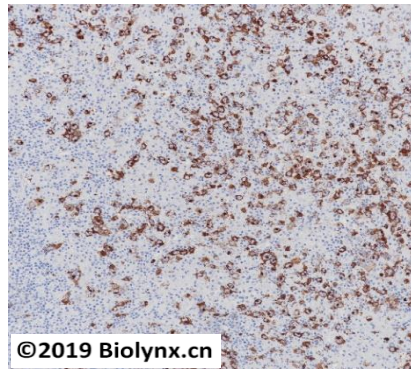
Membrane

Recommended method:

Heat induced epitope retrieval with Tris-EDTA buffer (pH 9.0), primary antibody incubate at RT (18°C-25°C) for 30 minutes.

Immunogen:

Immunized with the U-937 histiocytic cell line



Immunohistochemistry (Formalin/PFA-fixed paraffin-embedded sections) analysis of Hodgkin's Lymphoma tissue labelling CD15 with MMA. Heat mediated antigen retrieval was performed using Tris/EDTA buffer pH 9.0

Storage Buffer:

PBS 59%, Sodium azide 0.01%, Glycerol 40%, BSA 0.05%.

Storage conditions:

-25°C to -18°C

Storage instructions:


Shipped on blue ice. Upon delivery, aliquot, and store at -25°C to -18°C. Avoid freeze / thaw cycles.

Recommended Dilutions:

IHC-P: 1:100-1:200

Background References:

1. Pellegrini W, et al. Haematologica. 2007 May; 92(5):708-9.
2. Song JY, et al. Am J Surg Pathol. 2011 May; 35(5):767-72.

Product QC'd by: 

For research use only. Not for use in diagnostic or therapeutic applications.