

PLAP Mouse Monoclonal Antibody Product Datasheet

Catalog# BX50170

Clone# BPM6151

Predicted Molecular Wt: 70kDa
Species Cross-reactivity: Human
Applications: IHC-P

Purity: ProG affinity purified IgG
Form: Liquid
Swissprot ID: P05187

Background:

Placental alkaline phosphatase (PLAP) is a membrane-associated sialoglycoprotein enzyme normally present at high concentration in syncytiotrophoblasts within the placenta during the third trimester of gestation.

PLAP is expressed only in normal term placenta, endocervix and fallopian tube and also in ovarian and proximal gastrointestinal tumors. PLAP expression is rare in malignant germ cell tumors.

PLAP is an important marker in the identification of germ cell tumours and intratubular germ cell neoplasia.

Subcellular location:

Cytoplasm/Membrane

Recommended method:

Heat induced epitope retrieval with Tris-EDTA buffer (pH 9.0), primary antibody incubate at RT (18°C-25°C) for 30 minutes.

Immunogen:

Keeping secret

Storage Buffer:

PBS 59%, Sodium azide 0.01%, Glycerol 40%, BSA 0.05%.

Storage conditions:

-25°C to -18°C

Storage instructions:

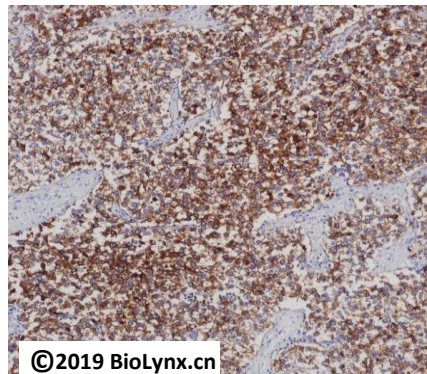
Shipped on blue ice. Upon delivery, aliquot, and store at -25°C to -18°C. Avoid freeze / thaw cycles.

Recommended Dilutions:

IHC-P: 1:100-1:200

Background References:

1. Dabare A A N P M , Nouri A M E , Cannell H , et al. Urologia Internationalis, 1999, 63(3):168-174.
2. Bailey D , Marks A , Stratis M , et al. Modern Pathology An Official Journal of the United States & Canadian Academy of Pathology Inc, 1991, 4(2):167.



Immunohistochemistry (Formalin/PFA-fixed paraffin-embedded sections) analysis of human seminoma tissue labelling PLAP with BPM6151.

Product QC'd by: 

For research use only. Not for use in diagnostic or therapeutic applications.